



BASIN BUSHCARE ACTION PLAN – WIRRACOO WALK

Document Number: D12/124001 • **Adopted:** 24 September 2013 • **Minute Number:** MIN13.990 • **File:** 26280E • **Produced By:** Planning & Development Services Group • **Review Date:** 24 September 2016

CONTACT INFORMATION

Group Name:	Basin Bushcare
Contact:	Norm Webb
Reserve Name:	Lady Denman Heritage Complex and Wirracoo Walk
Reserve Number:	BHU603
Land Tenure:	Crown Land Trust Manager/Care & Control

1. BUSHCARE GROUP GOALS

Aim

Improve the biodiversity and the passive recreation opportunities of the Wirracoo Walk and Lady Denmen Crown Land reserves.

Objectives:

1. Improve the Wirracoo Walking Track as per the Shoalhaven Walking Track Strategy.
2. Strategic control and removal of key invasive weed species.

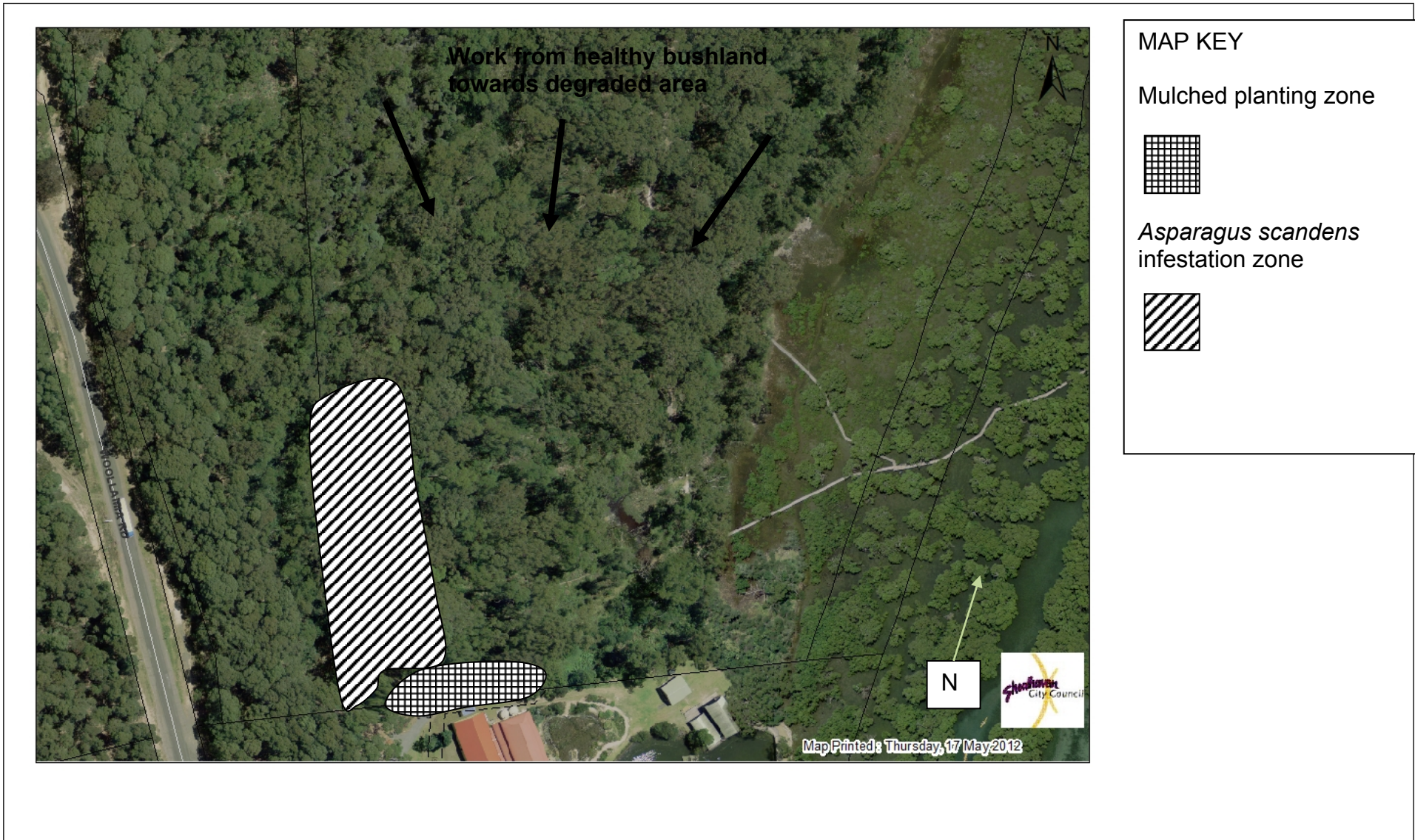
2. SHOALHAVEN BUSHCARE GROUP ACTIVITIES TABLE (to be in conjunction with attached site map)

NOTE: Priority should be rated as H = High (within 12 months); M = Medium (1-3 years); L = Low

GROUP ACTION (these should relate to your project description)	PRIORITY	METHOD	TIME
Seek support and approval from the NSW Land and Property Management Authority to undertake bush regeneration, weed control and track upgrade works on Crown Land Lot 7300 DP1128666	H	Bushcare Coordinator to seek approval from NSW LPMA	2012
<p>Continue to undertake control of key weed species based on threat to the reserve's biodiversity and the ability of weed to spread further within the region. Target weed control works should be in following priority order:</p> <ol style="list-style-type: none"> 1. Lantana (<i>Lantana camara</i>) 2. Winter Senna (<i>Senna pendula</i> sp. <i>Pendula</i>) 3. Bitou Bush (<i>Chrysanthemoides rotunda</i> spp <i>monilifera</i>) 4. Asparagus Fern (<i>Asparagus scandens</i>) 5. Crofton Weed (<i>Ageratina adenophora</i>) 	H	<p>Undertake weed control as follows</p> <ol style="list-style-type: none"> 1. Cut and paint and apply 50/50 glyphosate/water onto cut stump 2. As per 1 although small plants can be hand pulled 3. As per 1 & 2 4. Larger infestations can be sprayed using Metsulfon Methyl at recommendation rates, smaller isolated infestations should be dug out ensuring the crown is removed. 5. Spot spray using glyphosate at 2% dilution rates 	On going

GROUP ACTION (these should relate to your project description)	PRIORITY	METHOD	TIME
Create a mulched buffer revegetation zone on the boundary of the southern end of the Wirracoo Walk area, Lady Denman Heritage Complex, using species from the plans suggested revegetation list.	M	Heavily mulch area and plant with robust native species as per recommended species in plan	2012 - 13
Seek financial assistance to upgrade the Wirracoo Walk infrastructure (see appendix 1 for walking track location)	L	Bushcare Coordinator to apply for funding	As the opportunity arises

3. BUSHCARE GROUP ACTION PLAN MAP



4. BUSHCARE GROUP WHS & EQUIPMENT REQUIREMENTS

Type of Activity	Yes	SWMS name included
Manual weed control (cut & paint, scrape and paint etc)	√	SWMSNR040 Weed Control Activities
Chemical control (spraying of herbicides)	√	SWMSNR040 Weed Control Activities
Planting	√	SWMSNR030 Planting, Propagation and Seed Collection
Minor construction (walking track, fencing, outdoor furniture)		
Propagation & seed collection		
Education (school groups, field days etc)		
Other		

5. COUNCIL SUPPORT

Technical advice and support

- b. Provision of PPE equipment
- c. Supply tools, herbicide and materials within the constraints of budget
- d. Administration support
- e. Assistance with grant application, administration and management.
- f. Graphic design and printing assistance
- g. Assistance with facilitation and negotiation with third parties

6. HAS A SITE HAZARD AND RISK ASSESSMENT BEEN COMPLETED FOR THE BUSHCARE SITE?

Yes

7. LIST THE PERSONAL PROTECTION EQUIPMENT REQUIRED FOR VOLUNTEERS WHILST WORKING ON THE SITE

PPE Equipment Required	Date issued
First Aid Kit	2010
Gloves	2010
Sunscreen	2010
Insect repellent	2010

8. POSSIBLE FUTURE FUNDING

Project	Funding source
Assistance with weed control and walking track upgrade	NSW Land and Property Management Authority or Shoalhaven Tourism Grant

9. PLEASE LIST OTHER LOCAL OR REGIONAL MANAGEMENT PLANS OR STRATEGIES THAT THIS PLAN RELATES TO

Name of document	Year it was produced	Produced by
Shoalhaven Walking Track Strategy	Draft as of 1/6/2012	Shoalhaven City Council

10. RECOMMENDED PLANTING/REVEGETATION SPECIES LIST

SHRUBS	
Botanical	Common
<i>Acacia floribunda</i>	Sally Wattle
<i>Acacia longifolia</i> spp <i>longifolia</i>	Coastal Wattle
<i>Acacia suaveolens</i>	Sweet Scented Wattle
<i>Acacia ulicifolia</i>	Prickly Moses
<i>Acmena smithii</i>	Lilly Pilly
<i>Allocasuarina littoralis</i>	Forest She Oak
<i>Casuarina glauca</i>	Swamp She Oak
<i>Clerodendrum tomentosum</i>	Hairy Clerodendrum
<i>Hibbertia saligna</i>	Tall Guinea Flower
<i>Leptospermum polygalifolium</i>	Lemon Scented Tea Tree
<i>Melaleuca ericifolia</i>	Swamp Paperbark
<i>Monotoca eliptica</i>	Tree Broom Heath
<i>Notelea longifolia</i>	Mock Olive
<i>Pittosporum spinescens</i>	Orange Boxthorn
<i>Pittosporum undulatum</i>	Sweet Pittosporum
UNDERSTOREY (grasses, herbs, climbers)	
Botanical	Common
<i>Billardaria scandens</i>	Apple Dumplings
<i>Clematis aristata</i>	Old Mans Beard
<i>Dianella caerulea</i>	Flax Lily
<i>Gahnia sieberana</i>	Saw Sedge
<i>Geranium solanderi</i>	Creeping Geranium
<i>Glycine clandestinum</i>	Slender Love Creeper
<i>Hardenbergia violaceae</i>	False Sarsaparilla
<i>Hibbertia scandens</i>	Guinea Flower
<i>Isolepis nodosa</i>	Swamp Rush
<i>Juncus kraussii</i>	Native Rush
<i>Kennedia prostrata</i>	Dusky Coral Pea
<i>Kennedia rubicunda</i>	Running Postman
<i>Lomandra longifolia</i>	Spiny Matt Rush
<i>Microlaena stipoides</i>	Weeping Grass

11. SITE WEED LIST (See attached Bush Regeneration Information Sheets for details)

Noxious	Environmental	Control Method
Asparagus asparagoides (Bridal Veil Creeper)		Crown out underground growing parts and remove from site. With larger infestation it is more effective to release the biological control agent which is a rust fungus
Rubus fruticosus (Blackberry)		Scrape and paint canes during flower or fruit, larger infestations can be sprayed

		with a selective herbicide
Senecio madagascariensis (Fireweed)		Hand pull and remove seed from site
Ligustrum sinense (Small Leafed Privet)		Larger plants should be cut and painted smaller plants can be hand pulled
Chrisanthemoides monulifera subsp rotunda (Bitou Bush)		Larger plants should be cut and painted smaller plants can be hand pulled – large infestation should be sprayed with a non selective herbicide
	Asparagus aethiopicus (Asparagus Fern)	Crown out underground growing parts and remove from site - larger infestations can be sprayed with a selective herbicide
	Asparagus plumosus (Climbing Asparagus)	Crown out underground growing parts and remove from site - larger infestations can be sprayed with a selective herbicide
	Senna pendula (Cassia)	Larger plants should be cut and painted smaller plants can be hand pulled
	Passiflora edulis (Passionfruit)	Hand pull vines and leave on site
	Lonicera japonica (Honeysuckle)	Scrape and paint or spot spray larger infestations with a non-selective herbicide such as Roundup
	Solanum nigrum (Blackberry Nightshade)	Hand pull
	Stenotaphrum secundatum (Buffalo Grass)	Spot spray in winter using low dilution rates of a non-selective herbicide
	Sporobolus africanus (Parramatta Grass)	Spot spray before plant set seeds using 10 – 15ml per 1litre of water of glyphosate
	Paspalum dilatatum (Paspalum)	Spot spray plant with non selective herbicide at recommended rates of 1ml per 100ml
	Setaria incrassata (Pigeon Grass)	Spot spray plant with non selective herbicide at recommended rates of 1ml per 100ml
	Erharta erecta (Erharta)	Spot spray plant with non selective herbicide at recommended rates of 1ml per 100ml
	Axonopus fissifolius (Carpet Grass)	Spot spray plant with non selective herbicide at recommended rates of 1ml per 100ml

	Cynodon dactylon (Couch Grass)	Smaller infestations can be dug out by hand but be sure to remove all the rhizomes, larger areas can be spot sprayed with a non selective herbicide or covered in black plastic to solarise the infestation
	Sida rhombifolia (Paddys Lucern)	Hand pull smaller infestation of spot spray with a non-selective herbicide and mulch area heavily
	Physallis peruvian (Cape Gooseberry)	Hand pull and remove seed pods
	Aster subulatus (Aster)	Hand pull and remove seed from site
	Gnaphthium luteo album (Cudweed)	Hand pull and remove seed from site
	Conzya bonariensis (Fleabane)	Hand pull and remove seed from site
	Verbena bonariensis (Purple Top)	Hand pull and remove seed from site
	Phoenix canariensis (Phoenix Palm)	Dig out and remove from site
	Citrus jambhirii (Bush Lemon)	Cut and paint large tree

12. BUSHCARE SITE SPECIES LIST

OVERSTOREY TREES	
Botanical	Common
<i>Corymbia maculata</i>	Spotted Gum
<i>Eucalyptus botyiodes</i>	Southern Mahogany
<i>Eucalyptus pilularis</i>	Blackbutt
<i>Eucalyptus robusta</i>	Swamp Mahogany
SHRUBS	
Botanical	Common
<i>Acacia floribunda</i>	Sally Wattle
<i>Acacia longifolia spp longifolia</i>	Coastal Wattle
<i>Acacia mearnsii</i>	Black Wattle
<i>Acacia suaveolens</i>	Sweet Scented Wattle
<i>Acacia ulicifolia</i>	Prickly Moses
<i>Acmena smithii</i>	Lilly Pilly
<i>Allocasuarina littoralis</i>	Forest She Oak
<i>Avecinia marina</i>	Grey Mangrove
<i>Banksia integrifolia</i>	Coastal Banksia

<i>Banksia serrata</i>	Old Man Banksia
<i>Breynia oblongifolia</i>	Breynia
<i>Bursaria spinosa</i>	Black Thorn
<i>Casuarina glauca</i>	Swamp She Oak
<i>Clerodendrum tomentosum</i>	Hairy Clerodendrum
<i>Exocarpus cupressiformis</i>	Cherry Ballart
<i>Hibbertia saligna</i>	Tall Guinea Flower
<i>Leptospermum polygalifolium</i>	Lemon Scented Tea Tree
<i>Leucopogon juniperinus</i>	Coastal Beard - Heath
<i>Livistona australis</i>	Cabbage Tree Palm
<i>Melaleuca ericifolia</i>	Swamp Paperbark
<i>Monotoca eliptica</i>	Tree Broom Heath
<i>Notelea longifolia</i>	Mock Olive
<i>Pittosporum spinescens</i>	Orange Boxthorn
<i>Pittosporum undulatum</i>	Sweet Pittosporum
<i>Platyscaea lanceolata</i>	Carrot Tops
UNDERSTOREY (grasses, herbs, orchids)	
Botanical	Common
<i>Baumea juncea</i>	N/A
<i>Caladenia picta</i>	Painted Fingers
<i>Commelina cyanea</i>	Scurvy Weed
<i>Dianella caerulea</i>	Flax Lily
<i>Dicondra repens</i>	Kidney Weed
<i>Econopogon caespitosus</i>	Echidna Grass
<i>Entelasia stricta</i>	Right Angle Grass
<i>Eragrostis brownii</i>	Browns Lovegrass
<i>Gahnia sieberana</i>	Saw Sedge
<i>Geranium solanderi</i>	Creeping Geranium
<i>Gonocarpus teucrioides</i>	Raspwort
<i>Helechrysum elatum</i>	Everlasting Daisy
<i>Hypolepis muelleri</i>	Harsh Ground Fern
<i>Imperata cylindrica</i>	Blady Grass
<i>Isolepis nodosa</i>	Swamp Rush
<i>Juncus kraussii</i>	Native Rush
<i>Lomandra longifolia</i>	Spiny Matt Rush
<i>Microlaena stipoides</i>	Weeping Grass
<i>Opercularia aspera</i>	Stink Weed
<i>Oplismenus imbecillis</i>	Basket Grass
<i>Plectranthus parviflorus</i>	Native Cockspur
<i>Poa affinis</i>	N/A
<i>Pteridium esculentum</i>	Bracken Fern
<i>Pterostylis obtusa</i>	Blue Tongue Greenhood
<i>Samolus repens</i>	Creeping Brookweed
<i>Sarcornia quinqueflora</i>	Glasswort
<i>Schelhamera undulata</i>	Lilac Lily
<i>Senecio linearifolius</i>	Fireweed Groundsel
<i>Sporobolus virginicus</i>	Sand Couch
<i>Tetragonia tetraganoides</i>	Warrigal Spinach
<i>Zoysia macrantha</i>	Water Couch

UNDERSTOREY (vines & climbers)	
Botanical	Common
<i>Billardaria scandens</i>	Apple Dumplings
<i>Clematis aristata</i>	Old Mans Beard
<i>Glycine clandestinum</i>	Slender Love Creeper
<i>Hardenbergia violaceae</i>	False Sarsaparilla
<i>Hibbertia scandens</i>	Guinea Flower
<i>Kennedia prostrata</i>	Dusky Coral Pea
<i>Kennedia rubicunda</i>	Running Postman
<i>Parsonsia straminea</i>	Silk Pod Vine
<i>Stephania japonica</i>	Snake Vine

Bushcare Group Name:

Coordinator Name:.....

Signature:

Date:/...../.....

Appendix 1 – Wirracoo Walking Track location (Shoalhaven Walking Track Strategy)

