



**Shoalhaven**  
City Council

## CUDMIRRAH - BERRARA BUSHCARE ACTION PLAN

### CONTACT INFORMATION

<b>Group Name:</b>	Cudmirrah-Berrara Bushcare Group
<b>Contact:</b>	Beverly Endicott
<b>Address:</b>	30 Pope Ave Berrara
<b>Email:</b>	bendicott@bigpond.com
<b>Reserve Name:</b>	Various Reserves from Errol Bond, Third Ave, Kirby Beach & Berrara Creek
<b>Reserve No:</b>	BCU925, BCU956, BBR772
<b>Land Tenure:</b>	Crown & SCC
<b>Comm. Land Type:</b>	NA Foreshore

### 1. BUSHCARE GROUP GOALS

This is a revision of the original Cudmirrah - Berrara Action Plan prepared in 2003 and expands the sites and areas that the Bushcare Group will be targeting. It will also guide further funding applications: The aims of the action plan are as follows:

1. To continue with on- going maintenance of the Berrara Creek Flats reserve re-vegetation project, which was the original project of the Bushcare Group.
2. To continue with on going maintenance of the pockets of remnant native vegetation along the foreshore of Swan Lake at Errol Bond Reserve.
3. To expand the Bushcare Groups sites to include the following foreshore Crown Reserve:
  - a. Reef Beach Reserve (from the northern end of the Caravan Park to the gully & pumping station behind Fifth Ave ).
  - b. Kirby's Beach Reserve (from the gully to the steps at the end of Pope Ave).
4. Prioritise the above works according to amount and types of weeds growing and the level of infestation. This will then guide the Bushcare Group to the areas of the reserve where they should put the efforts into first and what reserves will need funding assistance to employ contract bush regenerators to assist.

2. **SHOALHAVEN BUSHCARE GROUP ACTION PLAN (to be included with site map)**

**NOTE: Priority should be rated as H = High (within 12 months); M = Medium (1-3 years); L = Low**

GROUP ACTION	PRIORITY	METHOD	TIME
<p><b>Area 1 Errol Bond Reserve</b></p> <p>1. Continue with manual control of Asparagus Fern and Senna re-growth on the areas that the Bushcare group have already worked</p>	M	<p>1. Hand pull small Senna and cut and pain larger ones using a 1:3 ratio of Glyphosate. Crown out re-growth Asparagus Fern and dispose of crowns.</p>	<p>12 – 24 months and monitor</p>
<p><b>Area 2 Reserve on western side of lake entrance between First Av &amp; Bridge</b></p> <p>1. As part of in-kind contribution SCC to pay contractors to primary weed Senna and Asparagus Fern using both manual and chemical control</p>	H	<p>1. Apply for funding and get quotes from bush regeneration contractors</p>	<p>April 2010 &amp; Dec 2011</p>
<p><b>Area 3 – Koolyn Drive Reserve &amp; Foreshore reserve behind Caravan Park</b></p> <p>1. Council to assist the Bushcare group by controlling the Blackberry, Senna and Asparagus Fern in the thin patches of remnant vegetation adjacent to the lake entrance</p> <p>2. This area is heavily infested with Asparagus Fern, Senna, Bridal Creeper, Stone Crop and other garden escape weeds; it should be left as the last area treated in the project</p> <p>3. Apply for funding for a stage of the project to employ contractors to undertake primary weed control and materials, plants to revegetate the area</p>	L	<p>1. Hand pull small Senna and cut and pain larger ones using a 1:3 ratio of glyphosate, Crown out re-growth Asparagus Fern and dispose of crowns.</p> <p>2. Get quotes from experienced contractors for funding application</p>	<p>2011 - 2012</p>

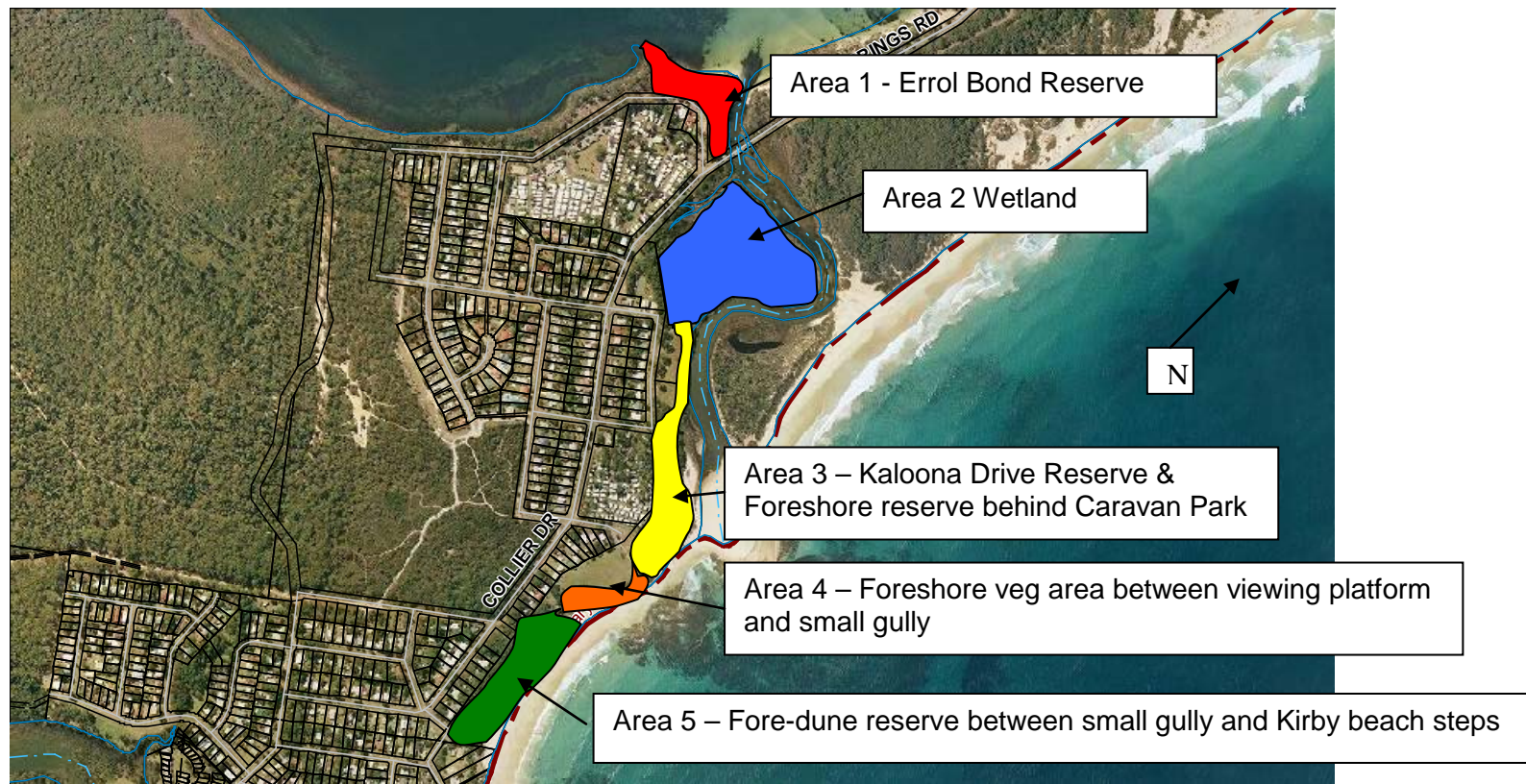
GROUP ACTION	PRIORITY	METHOD	TIME
<ul style="list-style-type: none"> <li>4. Bushcare Group to undertake Senna and Asparagus control on the far south end of this area in line with the boundary of caravan park and the viewing platform</li> <li>5. SCC to repair rear dune fence</li> <li>6. Bushcare Coordinator and group to directly liaise with semi permanent Caravan Park residents to raise awareness of weedy plants being grown in park</li> </ul>			
<p><b>Area 4 – Foreshore reserve between Reef Beach viewing platform and small gully</b></p> <ul style="list-style-type: none"> <li>1. Bushcare Group to work in this area primarily targeting Senna, Asparagus Fern and Coprosma (Mirror Bush)</li> <li>2. Council to remove small coral tree next to viewing platform</li> <li>3. Bushcare Group to remove Honeysuckle infestation in gully area and monitor other garden ornamentals</li> <li>4. Bushcare Group to control Sand Spurge infestation on the beach (<b>remember to wear latex gloves and avoid contact with plant's sap at all times</b>)</li> <li>5. In cooler months remove South African Iris and bag all bulbs and dispose of</li> </ul>	H	<ul style="list-style-type: none"> <li>1. Hand pull small Senna and cut and paint larger ones using a 1:3 dilution of glyphosate, Crown out re-growth Asparagus Fern and dispose of crowns.</li> <li>2. Seek quote for tree removal</li> <li>3. Hand removal and stem scraping of Honeysuckle using a 50:50 ratio of glyphosate</li> <li>4. Hand pull all Sea Spurge plants, bag and remove from site</li> <li>5. Hand pull and bag all bulbs and remove from site</li> </ul>	<p>Weed control Nov 2010 &amp; on going</p> <p>Coral tree removal 2010</p>

GROUP ACTION	PRIORITY	METHOD	TIME
<p><b>Area 5 – Fore-dune reserve between small gully and Kirby Beach steps</b></p> <ol style="list-style-type: none"> <li>1. Apply for funding to employ contractors to undertake Asparagus Fern control in two stages breaking it up between access tracks</li> <li>2. Apply for funding to get assistance from contractors to remove large infestation of honeysuckle next to Kirby Beach steps and behind house No's 118, 120, 122 Collier Dr</li> <li>3. Bushcare Group, with assistance from Work for the Dole will control Senna on rear dune area and around pumping station on Fifth Ave</li> <li>4. Council to pick up green waste piles</li> <li>5. Bushcare to do follow weed control and any planting as needed</li> <li>6. Trial ecological burn piles to stimulate germination of species of the Myrtaceae family</li> </ol>	M	<ol style="list-style-type: none"> <li>1. Apply for funding and if successful engage professional bush regeneration contractors</li> <li>2. Employ contractors</li> <li>3. Cut and paint Senna and pile up for pick up</li> <li>4. Undertake follow up weed control using combination of manual removal and spot spraying, seek assistance from Council regarding rate and timing</li> <li>5. Assistance with follow up of Asparagus seedlings from Bushcare Support Worker and contractors. Write to adjacent landholders to seek permission to control Senna and Asparagus Fern in adjacent private property</li> <li>6. Contractors and Bushcare group to selectively remove Pittosporum undulatum to create burn piles and Bushcare Coordinator to organise pile burns with RFS</li> </ol>	<ol style="list-style-type: none"> <li>1. 2011</li> <li>2. 2011</li> <li>3. 2012</li> <li>4. 2010 &amp; on going</li> <li>5. 2010 &amp; on going</li> <li>6. 2010/11</li> </ol>
<p><b>Area 6 – Berrara Creek Flats Reserve</b></p> <ol style="list-style-type: none"> <li>1. Bushcare Group to continue with maintenance of planted areas</li> </ol>	H	Spot spraying edges as needed and replacement planting	On going

GROUP ACTION	PRIORITY	METHOD	TIME
<b>Area 7 - Berrara Cove</b> <ol style="list-style-type: none"> <li>1. Contractors to spray large areas of Climbing Fireweed</li> <li>2. Bushcare Group to undertake follow-up planting of the area using low growing understory species.</li> </ol>	M	<ol style="list-style-type: none"> <li>1. Contractors to spray area</li> <li>2. Bushcare to plant with medium to low growing trees, shrubs and ground covers</li> </ol>	2010-11
<b>Area 8 Waterhaven St Reserve</b> <ol style="list-style-type: none"> <li>1. Assist with the establishment of a new sub group to follow the contractors work. As part of the estuary foreshore rehabilitation works</li> </ol>	H	<ol style="list-style-type: none"> <li>1. Bushcare Coordinator to assist the group with setting up group</li> </ol>	2010

3. **BUSHCARE GROUP ACTION PLAN MAP** - Please indicate below, on a map of your site what on-ground actions, from your group activity table, your group are planning to undertake. Include actions from other groups who may be involved, such as contractors, schools, Green Corps, Scouts etc. Please use black pen to indicate hard structures such as walking tracks, seats etc. (Council can help you access aerial map of your site if you wish, indicate North on your ma

Map 1- Showing areas 1 to 5:



Map 2 – Showing area 6, 7 & 8



#### 4. BUSHCARE GROUP OH&S & EQUIPMENT REQUIREMENTS

Type of Activity	Yes	SWMS name included
Manual weed control (cut & paint, scrape and paint etc)	√	SWMS 060 Manual Weed Control
Chemical control (spraying of herbicides)	√	SWMCSNR0040 Spraying using a hand held or backpack unit
Planting	√	SWMSNR030 Planting and seed collection
Minor construction (walking track, fencing, outdoor furniture)		
Propagation & seed collection	√	As above
Education (school groups, field days etc)		
Other		

#### 5. COUNCIL SUPPORT

- a. Supply of materials, tool, Chemicals and PPE equipment
- b. Bushcare Support Worker to assist with on site training for 6 x 4 hour sessions
- c. Assistance with grant funding application and management of funds.
- d. Managing contractors
- e. Provision of plants and mulch within limits of budget
- f. Assistance with printing and educational material
- g. Supply of all OH&S information relating to safety.

#### 6. HAS A SITE HAZARD AND RISK ASSESSMENT BEEN COMPLETED FOR THE BUSHCARE SITE?

Yes  No

Attach a copy of the site/s risk assessment to the plan.

#### 7. LIST THE PERSONAL PROTECTION EQUIPMENT REQUIRED FOR VOLUNTEERS WHILST WORKING ON THE SITE

PPE Equipment Required	Date issued
First Aid Kit	2007
Gloves	2007
Sunscreen	2007
Insect Repellent	2007



**8. POSSIBLE FUTURE FUNDING**

<b>Project</b>	<b>Funding source</b>
Stage 3 of the Berrara – Cudmirrah Dunecare and regeneration under the coastal program	SRCMA

**9. PLAN WILL BE REVIEWED THREE YEARLY – NEXT REVIEW DUE: 2013**

The group should review a summary of the Bushcare Policy & Procedures at the time of each annual review

**10. PLEASE LIST OTHER LOCAL OR REGIONAL MANAGEMENT PLANS OR STRATEGIES THAT THIS PLAN RELATES TO**

<b>Name of document</b>	<b>Year it was produced</b>	<b>Produced by</b>
Generic Community Plan of Management – Natural Areas	2001	Shoalhaven City Council
Shoalhaven Foreshore Reserves Policy	2005	Shoalhaven City Council
Swan Lake and Berrara Creek Natural Resources Management Strategy	2001	Shoalhaven City Council
Draft Shoalhaven Coastal Management Plan	2010	Shoalhaven City Council

## 11. SUGGESTED SPECIES LIST FOR FUTURE SITE REVEGETATION

<b>OVERSTOREY TREES</b>	
<b>Botanical</b>	<b>Common</b>
<i>Allocasuarina distyla</i>	Sheoak
<i>Banksia integrifolia</i>	Coastal Banksia
<i>Cassine australis</i>	Red Fruited Olive Plum
<i>Casuarina glauca</i>	Swamp Oak
<i>Eucalyptus botryoides</i>	Bangalay
<i>Corymbia gummifera</i>	Red Bloodwood
<i>Leptospermum leavigatum</i>	Coastal Tee Tree
<i>Leucopogon parviflorus</i>	Bearded Heath
<i>Monotoca elipitica</i>	Monotoca
<b>SHRUBS</b>	
<b>Botanical</b>	<b>Common</b>
<i>Acacia longifolia</i> var. <i>longifolia</i>	Golden Sydney Wattle
<i>Acacia longifolia</i> var. <i>sophorae</i>	Coastal Wattle
<i>Breynia oblongifolia</i>	Dwarf's Apple / Coffee Bush
<i>Correa alba</i>	White Correa
<i>Correa reflexa</i>	Common Correa
<i>Myoporum insulare</i> spp <i>boniesse</i>	Boobialla
<i>Pittosporum revolutom</i>	Rough Pttosporum
<i>Westringia fruiticosa</i>	Coastal Rosemary
<b>UNDERSTOREY (grasses, herbs, climbers)</b>	
<b>Botanical</b>	<b>Common</b>
<i>Dianella revoluta</i>	Flax Lily
<i>Hardenbergia violacea</i>	Happy Wanderer
<i>Hibbertia scandens</i>	Golden Guinea Flower
<i>Kennedia rubicunda</i>	Running Postman
<i>Lomandra longifolia</i>	Lomandra
<i>Rhagodia candolleana</i>	Seablite
<i>Scaevola albida</i>	Fan Flower
<i>Viola hederacea</i>	Native Violet

## 12. SITE WEED LIST

Noxious	Other	Control Method
	Asapragus Fern	Crown out and remove rhizomes from site or spray using 1:50 glyphosate + pulse
	Bridal Creeper	Remove fruit and dig out all rhizomes and dispose of corms. Spray with glyphosate in early spring but must be followed up
	Coral Tree	Direct inject with neat round up
	Honeysuckle	Scrape and paint with 1/1 glyphosate and removal all waste from site
	Lantana	Cut and paint with 1/1 glyphosate
	Mirror Bush (Coprosma)	Cut and paint with 1/1 glyphosate
	Monbretia	Dig out bulbs and remove from site
	Sea Spurge	Hand removal of all seedlings and dispose off (be sure to wear latex gloves and avoid contact with sap as its toxic)
	Senna (Cassia)	Cut and paint with 1/1 glyphosate