



2022 NATIONAL LANDCARE CONFERENCE

TUESDAY 23 TO THURSDAY 25 AUGUST, 2022
INTERNATIONAL CONVENTION CENTRE, DARLING HABOUR, SYDNEY

PROUDLY SUPPORTED BY



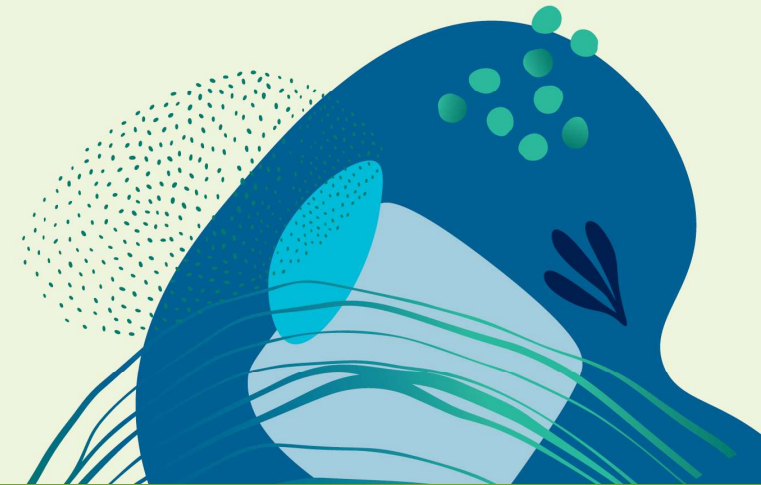
National
Landcare
Program



National
Landcare
Network



Landcare
Australia





Collaborating to Create Koala Corridors in Kurrajong

Katherine Clare,
Hawkesbury-Nepean Landcare Network

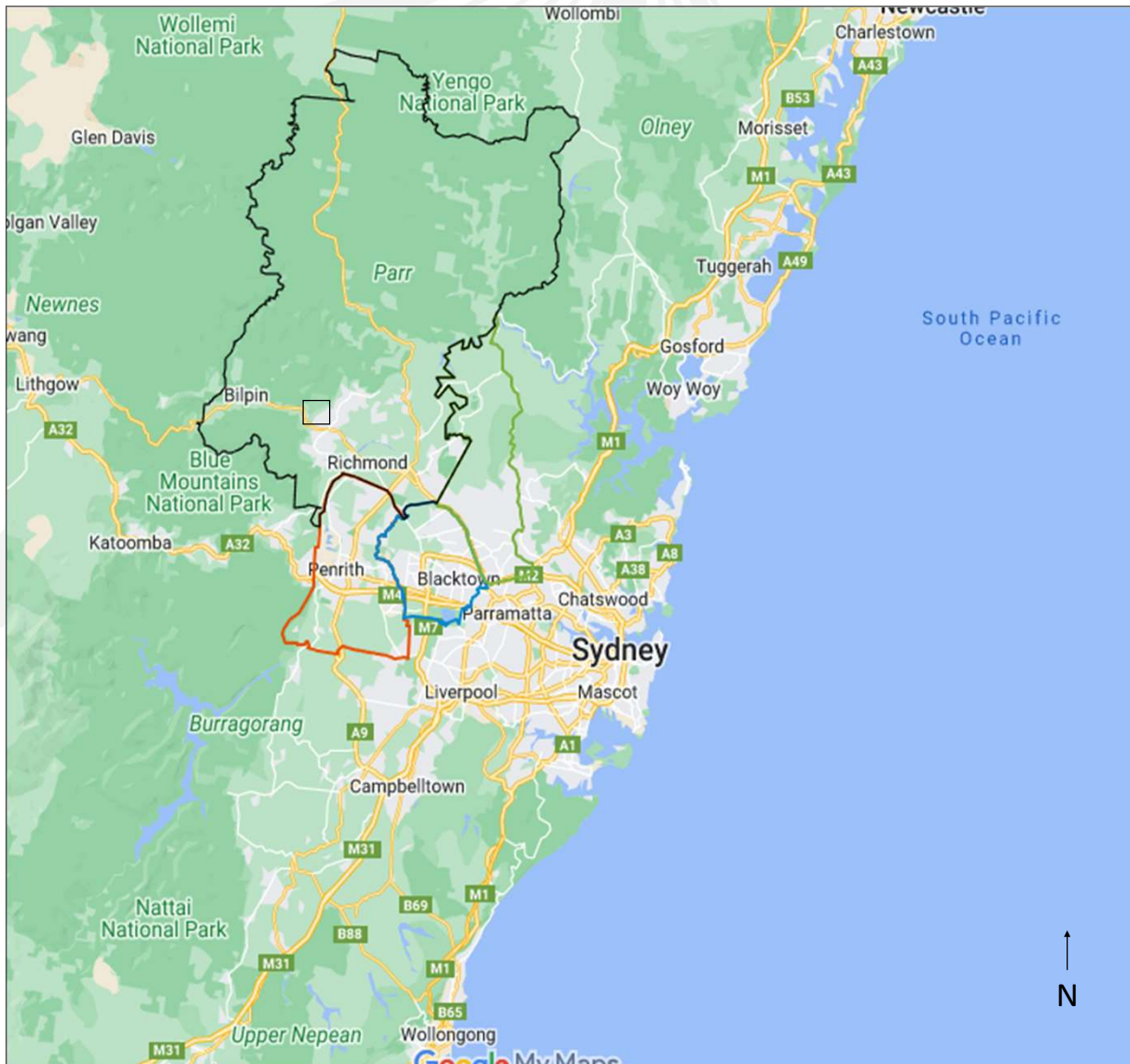




Today

- The Catchment
- Project Overview & Outcomes
- Building community capacity
- Partnership benefits
- Experiences
- Take Aways and Learnings





Location

Map of Greater Sydney. The boundaries of the four LGAs HNLN operates in are outlined as follows: Black – Hawkesbury City , Orange – Penrith City, Blue – Blacktown City, Green - The Hills Shire.

The square in the center is where there Kurrajong Koala Corridor is located.





Koala on Ed and Jacqui's fence bordering Stephen and Les and Di

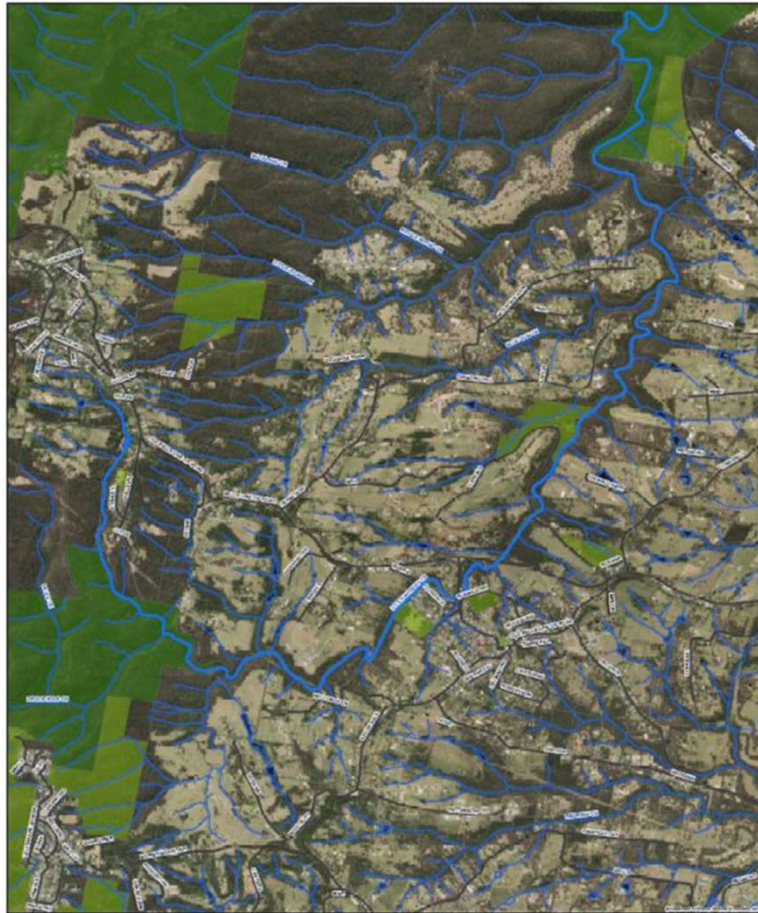


Koalas in Blue Mountains/ Hawkesbury

- Most genetically diverse in Australia (to current knowledge)
- Affected by chlamydia
- Habitat loss
- Roads and fragmentation
- Under stress
- Very mobile



Little Wheeny Creek Catchment



Disclaimer:

Data has been extracted from digitized field information. The State of NSW and Greater Sydney Local Land Services and its employees, officers, agents or servants accepts no responsibility for the result of any actions taken or the decisions made on the basis of the information, or for any errors, omissions or inaccuracies contained in this map.

Map created by Greater Sydney L.L.S. Base topographic data supplied by the © NSW Department of Finance and Services. Reference data © NSW Office of Environment and Heritage.

Copyright New South Wales Government. All Rights Reserved. No part of this map may be reproduced without written permission.

Legend

- HYDRONAME
- LITTLE WHEENY CREEK
- Drainage
- Crown Reserves
- National Park Estate
- Roads
- LotOwnership

N



0 0.5 1 2 Kilometers

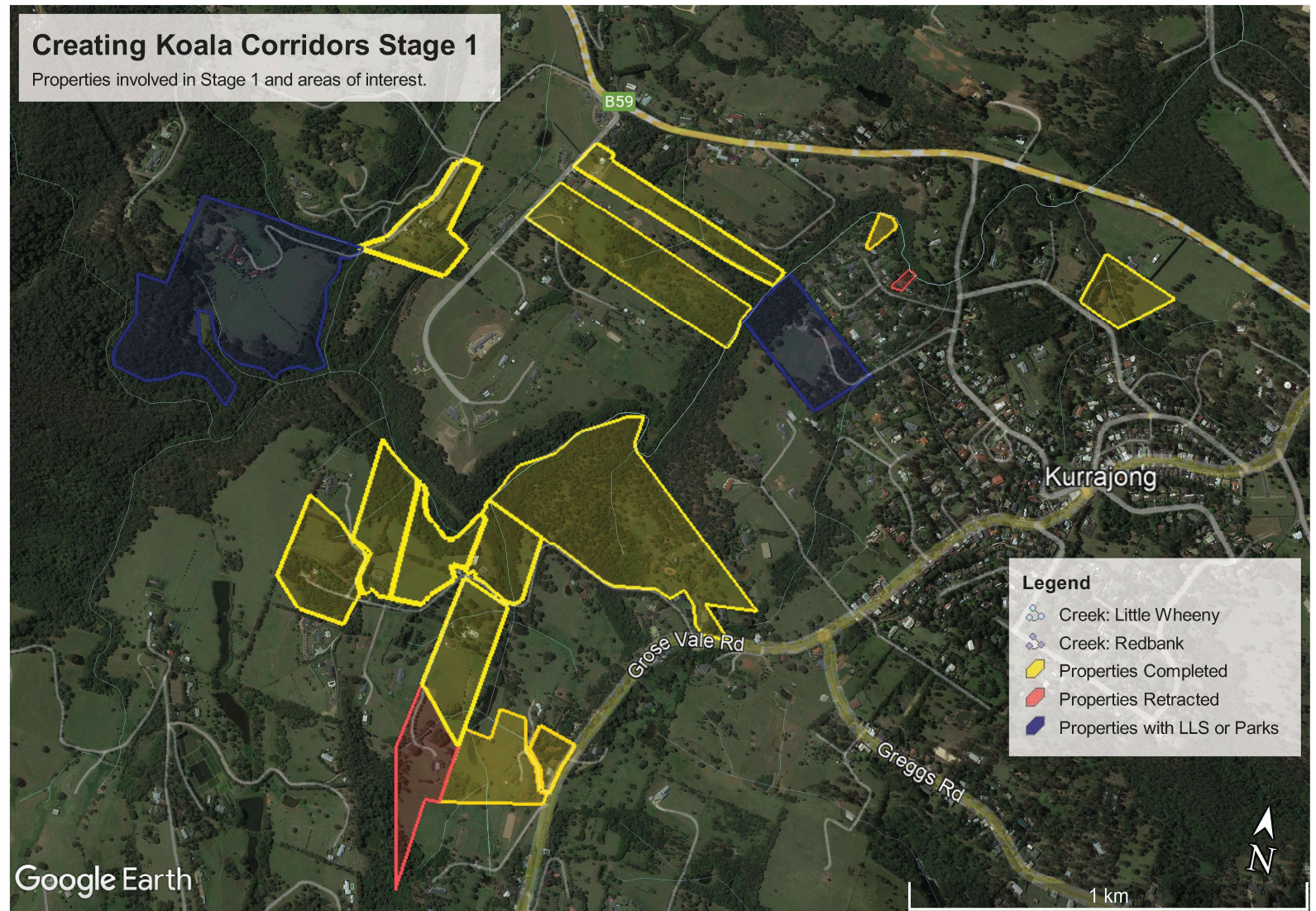


An important catchment

- Prime Koala Habitat
- Threatened Vegetation Communities
- Threatened species incl Macquarie Perch
- Proximity to World Heritage Area, Tributary of Colo River
- Aboriginal Cultural Heritage
- Wildlife super highway

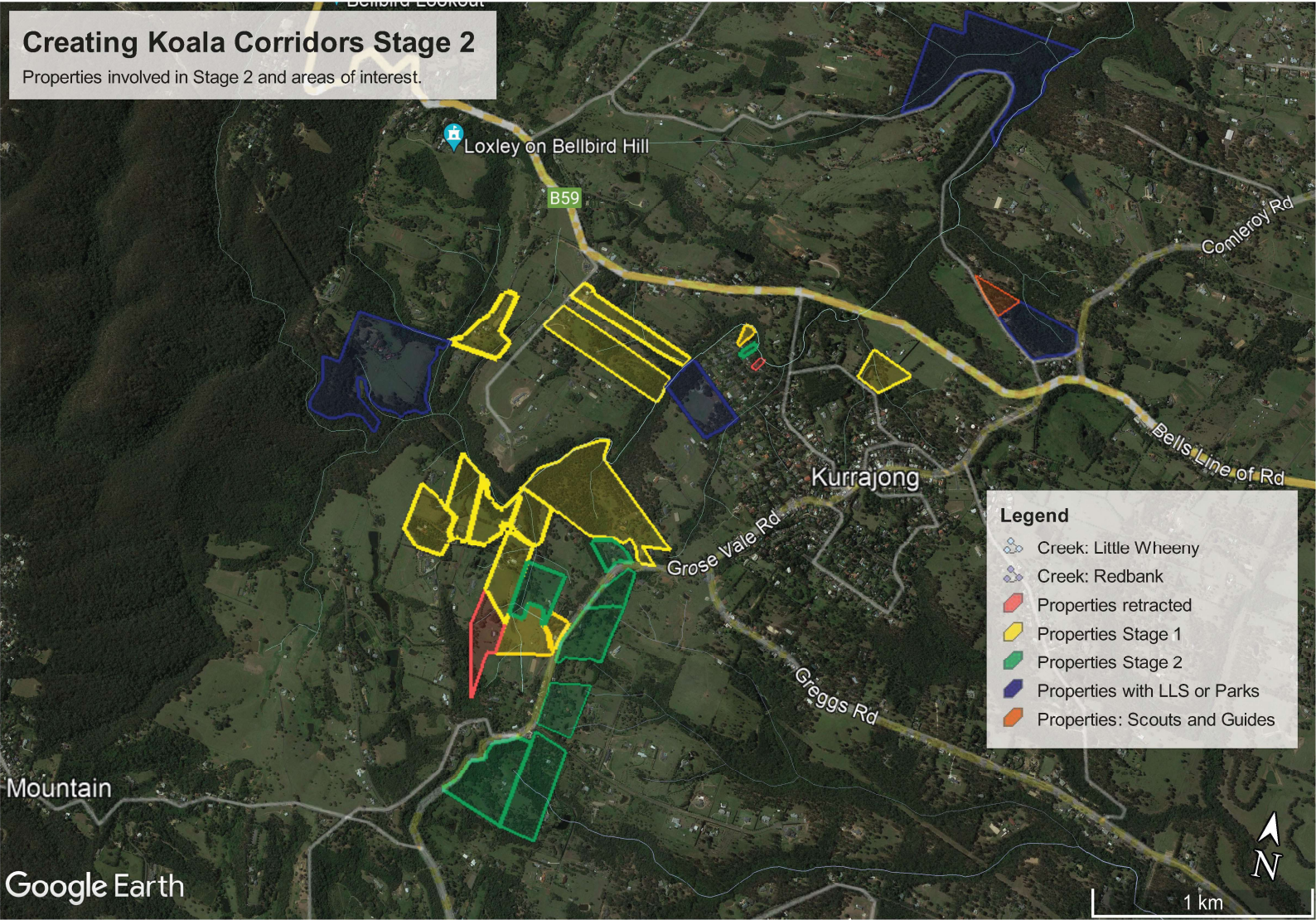
Cross property, catchment based project

Working on different parcels of the big picture



Cross property, catchment based project

Stage 2 sneak peak



Overview

- 13 landholders working together
- Restoring remnant bushland, habitat, and the Kurrajong Koala Corridor
- Includes endangered ecological communities (EECs)
- Funded through a Regional Partnership with Greater Sydney Local Land Services
- Coordinated by HNLN & GSLLS
- Regular working bees and events
- Further collaboration, interest, and outreach



Outcomes



\$47, 310

Cash Funding

\$103, 444

Project Value

61.79 ha

Total Area

1.69 ha

Revegetation

19.28 ha

Pest Plant
Management

33.0 ha

Sig species/EEC
protected or
managed

6

Community
Capacity
events

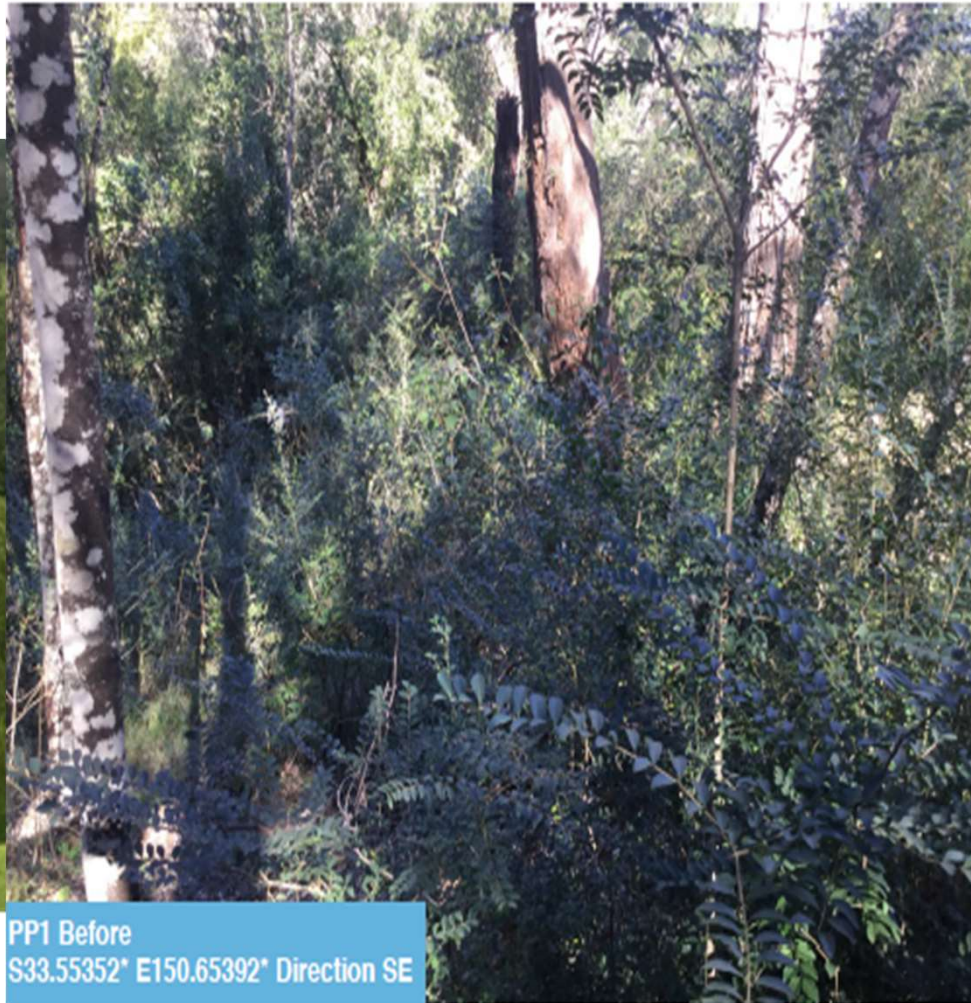
22.44 ha

Enhanced/
rehabilitated
native habitat



Restoration

NATIONAL LANDCARE
20
22



PP1 Before
S33.55352° E150.65392° Direction SE



PP1 After
S33.55352° E150.65392° Direction SE



Esbury-
bean
Landcare
work

How it came together

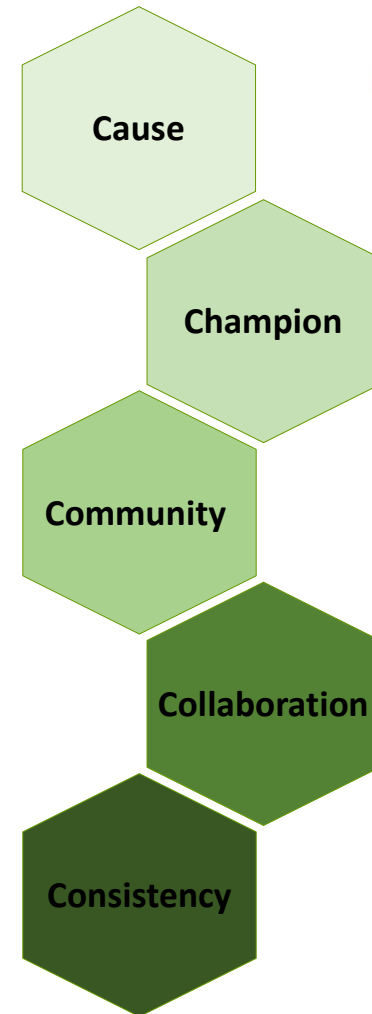
Cause : development threatens conservation of the local area

Champion : someone to spread the idea and seek funding

Community : property visits and discussion to bring people together on a common cause

Collaboration : organisations - GSLLS and HNLN, work to their strengths to achieve outcomes on the ground and for the landholders

Consistency: ongoing support for the landholders during the project, ensuring outcomes are met and a group forms



Building Capacity - landholders



Property Walk & Talks

Monitoring Points

Research and WIRES



Sharing knowledge and seeing other parts of the 'big picture'



Learning new skills that they can continue to use for reporting and their own purposes



Stronger connection to and knowledge of koalas



Building Capacity – staying connected



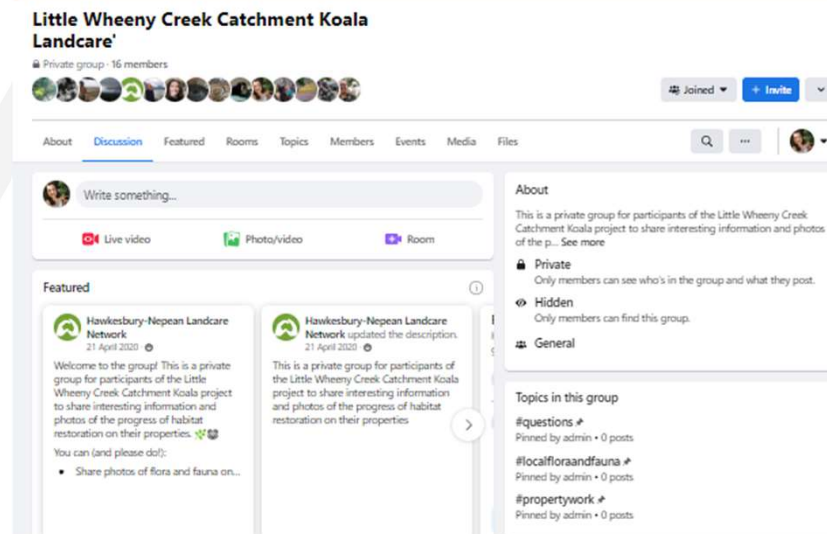
Challenges

- Covid-19, Natural disasters
- A community under stress
- Halt to on-ground works



Solutions

- Social media
- Regular emails
- In-person visits
- Smaller get-togethers when possible



Benefits

- Continued knowledge sharing
- Landholder support
- Gentle return to normal
- Ongoing communication channel



Building Capacity - community



Youth mentoring

Open community events

Recognition



Peer-to-peer mentoring and working bee, to share knowledge and help



Introduction to Landcare, Meet & Greet



Recognition, connection and awareness



Discoveries



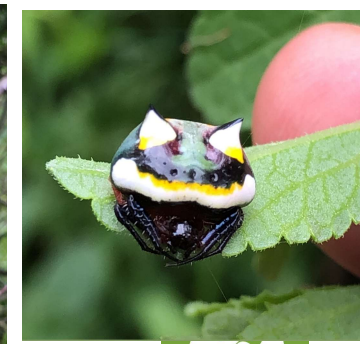
Scrub Turpentine, *Rhodamnia rubescens*



Koalas, *Phascolarctos cinereus*



Cumberland Plain Land Snail, *Meridolum corneovirens*



Invertebrate life



Partnership Benefits



Community Capacity
Grant management
Additional property visits

Staying on track
Further collaborations
Reporting



Local Land Services
Greater Sydney

Assisted EOI with HNLN
Assist events
Mapping, property plans

Grant Funding
Local knowledge
Budgeting



The LLC role (both)
HRCC host
Operational budget



Partnership Benefits



On-ground works in-kind
Managing contractor hours

Community support
Growing the movement



Creating Canopies
Get Your Hands Dirty (youth)
Landcare Australia Conference

Assistance funding
Promotion



Research updates
Educational Talks



Additional Outcomes

On the Ground

- In-kind above predicted
- Additional revegetation
- Reduced bell miner activity
- Critically endangered species discovered

Community

- Landcare group formed
- Skilled, confident landholders
- Connected and supported community
- Increased interest in Landcare
- Recognition from all levels of Government
- Successful model for Stage 2



Experiences and Feedback



"I have enjoyed meeting other landholders in the area who share the same desire to rehabilitate the vegetation to its condition prior to being cleared for agriculture.

During the course of the project we have discovered critically endangered flora and fauna. Without the help from Greater Sydney Local Land Services this would not have been possible." – Ed and Jacqui Lea

"To meet the group and hear their stories, connectedness and aspirations, was heart warming. To see your enthusiasm for the betterment of our local world was a delight." – Denise D

"Meeting and get-togethers really help keep the motivation going to continue private property works." - Kate Young

Looking ahead



- Stage 2 Completion
- Including new landholders
- Other Catchment based Landcare groups in the vicinity
- Land for Wildlife or BCT
- Western Sydney Dry Rainforest landholder resource
- Future events based on feedback



Bush regeneration for our Project Wrap Up day



Learnings

- Successful in-kind work requires semi-skilled landholders
- Time is a limited resource – the peri-urban and rural space
- Landholders value being connected to each other
- Everyone likes a sneak peek
- Landholders want to learn
- Common skills can be taken for granted (photo points and plant communities)
- Reliance on others to complete work on time
- Overcoming personal health



ALL LANDCARE CONNECT



Take Aways

Partnerships

- Leverage each others' strengths
- Deliver more with less
- Work within your capacity
- A visible Landcare group is a tool/hub for outreach into and within the community
- Welcome additional partnerships



Building Capacity

- A connected community of landholders is powerful
- Investing in community >> continued outcomes beyond funding
- The bigger picture
- Patience, consistency, support!



Thank you



Landcare groups who can work collaboratively with others and build their community's capacity will achieve holistic outcomes for the **community, environment, and landholders** conserving it.



Katherine Clare
Local Landcare Coordinator
Hawkesbury-Nepean Landcare Network
E: landcare@hrcc.nw.gov.au P: 45749600





THANK YOU



PROUDLY SUPPORTED BY

