



BOOF'S BUSHCARE ACTION PLAN

Document Number: D12/105745 • **Adopted:** 23/11/2012 • **Minute Number:** MIN12.1296
• **File:** 1835E • **Produced By:** City Services & Operations Group •
Review Date: 23/10/2012

CONTACT INFORMATION

Group Name:	Boof's Bushcare Group – Fegen St Wetland
Contact:	Roger Hart
Telephone:	4429 7227
Reserve Name:	Winnimmia Lane
Reserve Number:	BHU420
Land Tenure:	Crown Land TM/CC

1. BUSHCARE GROUP GOALS

<p>Aims:</p> <p>To protect and restore the Bangalay Sand Forest Complex vegetation on the site which is listed as an Endangered Ecological Community under the NSW Threatened Species Conservation Act 1995.</p> <p>To protect and restore the Wetland and estuarine vegetation, which contains remnants of Swamp Oak Forest Complex.</p> <p>Objectives:</p> <p>Contain and control noxious and environmental weeds around urban interface of reserve.</p> <p>Reduce further weed infestation in core of reserve, consolidating previously treated areas targeting Honeysuckle, Senna and Asparagus Fern.</p> <p>Increase community awareness with on ground participation and Bushcare information day BBQ on site.</p> <p>Educate local residents regarding dumping garden refuse into council reserves.</p> <p>To collect native seed in and around the reserve and broadcast into spare niches created by weed removal.</p>

2. SHOALHAVEN BUSHCARE GROUP ACTIVITIES TABLE (to be in conjunction with attached site map)

NOTE: Priority should be rated as H = High (within 12 months); M = Medium (1-3 years); L = Low

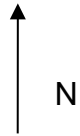
GROUP ACTION	PRIORITY	METHOD	TIME
<p>AREA 1 - Bangalay Sand Forest Complex</p> <p>Group to consolidate previous weed control work, targeting Honeysuckle (Canopy Protection, skirting around any native canopy trees) Senna, Bitou Bush, Privet and Asparagus Fern to promote regeneration of native species.</p> <p>Council and Bushcare Group to establish a vegetation monitoring plot within this zone and establish photo points to monitor changes in vegetation.</p>		<ul style="list-style-type: none"> • Cut & paint and scrape and paint Honeysuckle with Glyphosate • Cut paint woody weeds with Glyphosate and stockpile • Crown out Asparagus Fern, removing and bagging rhizome and any seed • Establish 20mx20m quadrant and photo points to monitor vegetation condition 	On going
<p>AREA 2 - Disturbed Sewage Pumping Station Area</p> <p>Council to provide assistance with control of Blackberry, Senna, Privet, Coral tree saplings and Honeysuckle to prevent further spread.</p>	L	<ul style="list-style-type: none"> • Cut & paint, hand dig isolated patches of Blackberry • Spray large infestations of Blackberry with selective herbicide when area is dry so as not to get run off into drainage lines running into wetland. • Cut/ paint woody weeds with glyphosate and stockpile 	2012 and on going
<p>AREA 3 - Wetland</p> <p>Prevent any further seed dispersal from Cockspur Coral Tree and Willow within and on the buffer areas of the wetland.</p>	M	Drill and fill Cockspur Coral tree and Willow with neat Glyphosate and leave in situ	2012 and on going
<p>AREA 4 - Estuarine Swamp Oak Forest</p>	M	Seasonal seed collection and	On going

GROUP ACTION	PRIORITY	METHOD	TIME
<p>Target weed control of Honeysuckle (Canopy Protection, skirting around any native canopy trees) Senna, Bitou Bush, Privet and Asparagus fern to promote regeneration of native species.</p> <p>Undertake revegetation of mid and canopy species to promote biodiversity and resilience of the vegetation community using species from the plans suggested revegetation list.</p> <p>Collection of native seed in and around reserve (ie, Lomandra longifolia, Allocasuarina glauca, Banksia integrifolia) and broadcast into spare niches using species from the plans suggested revegetation list.</p>		tube stock planting in Autumn or Spring	
<p>AREA 5 - Revegetation Site</p> <p>Planting of endemic species around perimeters of reserve to create buffer. Communication with Holiday Haven Tourist park adjacent to reserve, to do follow up cut & painting of Senna and replacement planting of endemic species on boundaries.</p>	M	Use species from the plans attached suggested species revegetation list	On going

3. BUSHCARE GROUP ACTION PLAN MAP



Map Key	
Area 1	
Area 2	
Area 3	
Area 4	
Area 5	



4. BUSHCARE GROUP WHS & EQUIPMENT REQUIREMENTS

Type of Activity	Yes	SWMS name included
Manual weed control (cut & paint, scrape and paint etc)	√	SWMSNR040
Chemical control (spraying of herbicides)	√	SWMSNR040
Planting	√	SWMSNR030
Minor construction (walking track, fencing, outdoor furniture)		
Propagation & seed collection	√	SWMSNR030
Education (school groups, field days etc)	√	SWMSNR040
Other	√	SWMSNR040

5. COUNCIL SUPPORT

Technical advice and support

- b. Provision of PPE equipment
- c. Supply tools, herbicide, plants, guards, stakes, water crystals and materials within the constraints of budget
- d. Administration support
- e. Assistance with grant application, administration and management.
- f. Supply of water cart for watering plants
- g. Graphic design and printing assistance
- h. Assistance with facilitation and negotiation with third parties

6. HAS A SITE HAZARD AND RISK ASSESSMENT BEEN COMPLETED FOR THE BUSHCARE SITE?

Yes

7. LIST THE PERSONAL PROTECTION EQUIPMENT REQUIRED FOR VOLUNTEERS WHILST WORKING ON THE SITE

PPE Equipment Required	Date issued
First Aid Kit	01/12/2011
Gloves	01/12/2011
Sunscreen	01/12/2011
Insect repellent	01/12/2011

8. POSSIBLE FUTURE FUNDING

Project	Funding source
Assistance with primary weed control and restoration works	Federal or State Government

9. PLEASE LIST OTHER LOCAL OR REGIONAL MANAGEMENT PLANS OR STRATEGIES THAT THIS PLAN RELATES TO

Name of document	Year it was produced	Produced by
Generic Community Plan of Management – Natural Areas	2001	Shoalhaven City Council

10. RECOMMENDED PLANTING/REVEGETATION SPECIES LIST

OVERSTOREY TREES	
Botanical	Common
<i>Acmena smithii</i>	Lilli Pilli
<i>Allocasuarina glauca</i>	Swamp Oak Forest
<i>Banksia integrifolia</i>	Coastal Banksia
<i>Eucalyptus botrioides</i>	Bangalay
<i>Melaleuca linearifolia</i>	Soft Leaf Melaleuca
SHRUBS	
Botanical	Common
<i>Acacia ulicifolia</i>	Prickly Mosses
<i>Breynia oblongifolia</i>	Native Privet
<i>Melaleuca ericifolia</i>	Swamp Paperbark
<i>Monotca eliptica</i>	Pigeon Berry Ash
UNDERSTOREY (grasses, herbs, climbers)	
Botanical	Common
<i>Hibbertia scandens</i>	Native Guinea Flower
<i>Imperata cylindrica</i>	Blady Grass
<i>Juncus ursitatus</i>	Native Rush
<i>Parsonsia straminea</i>	Monkey Rope Vine
<i>Phragmites australis</i>	Native Reed
<i>Viola sieberana</i>	Native Violet

11. SITE WEED LIST

Noxious	Environmental	Control Method
Cestrum parqui (Green Cestrum)		Scrape and paint with glyphosate
Chrisanthimoides monulifera Bitou Bush)		Cut & paint with glyphosate, hand pull seedlings
Rubus fruticosus (Blackberry)		Cut & paint with glyphosate, hand dig. Council to spray large infestations
	Asparagus aethiopicus (Asparagus Fern)	Crown out, removing and bagging rhizome
	Canna x generalis (Canna Lily)	Hand dig, bag propagule
	Chlorophytum comosum (Non varigated Spider Plant)	Crown out, removing and bagging rhizome
	Delaria odorata (Cape Ivy)	Hand remove, spray large isolated infestations with glyphosate

	Erythrina crista galli (Cockspur Coral Tree)	Drill and fill with glyphosate
	Leonotis leonurus (Lions Tail)	Cut & paint with glyphosate, hand pull
	Ligustrum spp (small and large leaf privet)	Cut & paint with glyphosate, hand pull seedlings
	Lonicera japonica (Honeysuckle)	Hand weed, scrape paint & cut paint around bases of Native Canopy species
	Nephrolepis cordifolia (Fishbone Fern)	Hand pull and stock pile
	Odontonema tubaeforme (Red flowering garden escapee)	Cut/paint with glyphosate, hand pull.
	Paspalum uvillei (Vasey Grass)	Spot spray 1:100 glyphosate
	Physalis peruviana (Cape Gooseberry)	Hand pull and bag seeds
	Phytolacca octandra (Ink Weed)	Cut/paint with glyphosate, hand dig.
	Rosa rubiginosa (Briar Rose)	Cut/paint with glyphosate, hand dig.
	Senna pendula (Cassia)	cut/paint with glyphosate, hand pull seedlings.
	Tradescantia fluminescens (Wandering Jew)	Hand weed and bag propagule
	Verbena incompta (Purple Top)	Drill and fill with glyphosate

12. BUSHCARE SITE SPECIES LIST

OVERSTOREY TREES	
Botanical	Common
<i>Acacia implexa</i>	Hickory
<i>Acacia mearnsii</i>	Blackwattle
<i>Acmena smithii</i>	Lilypilly
<i>Allocasuarina glauca</i>	Swamp She Oak
<i>Banksia integrifolia</i>	Coastal Banksia
<i>Eucalyptus botrioides</i>	Bangalay
<i>Eucalyptus longifolia</i>	Woollybutt
<i>Eucalyptus pilularis</i>	Blackbutt
<i>Melaleuca linearifolia</i>	Snow in Summer
<i>Pittosporum undulatum</i>	Sweet Pittosporum

SHRUBS	
Botanical	Common
<i>Acacia ulicifolia</i>	Prickly Moses
<i>Breynia oblongifolia</i>	Breynia
<i>Melaleuca ericifolia</i>	Swamp Paperbark
<i>Monotca eliptica</i>	Tree Broom Heath
UNDERSTOREY (grasses, herbs, orchids)	
Botanical	Common
<i>Centella asiatica</i>	Centella
<i>Commelina cyanea</i>	Native Wandering Jew
<i>Gahnia clarkei</i>	Sword Grass
<i>Gahnia clarkei</i>	Sword Grass
<i>Imperata cylindrica</i>	Blady Grass
<i>Imperata cylindrica</i>	Blady Grass
<i>Juncus ursitatus</i>	Juncus
<i>Oplismenus imbecillis</i>	Basket Grass
<i>Persicaria decipiens</i>	Creeping Knotweed
<i>Phragmites australis</i>	Native Reed
<i>Phragmites australis</i>	Native Reed
<i>Ranunculus inundatus</i>	River Buttercup
<i>Ranunculus inundatus</i>	River Buttercup
<i>Stellaria sp</i>	Starwort
<i>Themeda australis</i>	Kangaroo Grass
<i>Themeda australis</i>	Kangaroo Grass
<i>Viola sieberana</i>	Tiny Violet
UNDERSTOREY (vines & climbers)	
Botanical	Common
<i>Hibbertia scandens</i>	Guinea Flower
<i>Parsonsia straminea</i>	Common Silkpod

Bushcare Group Name:

Coordinator Name:.....

Signature:

Date:

Attachment 1 - Fegen St Wetland Site Bangalay Sand Forest Complex EEC Map

