



LOWER MULGEN CREEK BUSHCARE ACTION PLAN

Document Number: D13/200334 • **Adopted:** 24 September 2013 • **Minute Number:** MIN13.990 • **File:** 26279E • **Produced By:** Planning & Development Services Group • **Review Date:** 24 September 2016

CONTACT INFORMATION

| | | |
|------------------------|-----------------------------------|---|
| Group Name: | Lower Mulgen Creek Bushcare Group | |
| Contact: | Allan and Brenda Sloane | |
| Address: | 2 Centennial Court, Bomaderry | |
| Telephone: | 4421 5910 | |
| Email: | absloane@bigpond.net.a | |
| Reserve Name: | Mulgen Creek | |
| Reserve Number: | NBO113 | |
| Land Tenure: | SCC | Comm. Land Type: Natural Area - Bushland |

1. BUSHCARE GROUP GOALS.

The goal of the Lower Mulgen Creek Bushcare Group is to restore the degraded vegetation along the lower section of Mulgen Creek (downstream of Lyndhurst Ave) to improve the biodiversity of the remnant native vegetation. The group also would like to restore a sense of pride in the local neighbourhood through the work of this project.

2. SHOALHAVEN BUSHCARE GROUP ACTIVITIES TABLE (to be in conjunction with attached site map)
NOTE: Priority should be rated as H = High (within 12 months); M = Medium (1-3 years); L = Low

| GROUP ACTION (these should relate to your project description) | PRIORITY | METHOD | TIME |
|--|-----------------|---|----------------------|
| Seek funding through Council and other agencies for assistance in undertaking Bushcare activities | H | Identify needs and apply for grants with Council advice and assistance | On – Going |
| Motivation, awareness of reserve values and work risks, and development of skills for volunteers and neighbours | H | Onsite training in ecology, botany, recording fauna, bush regeneration techniques, digital art & graphic design, construction techniques and risk assessment | 2013 and On-going |
| Design and print a flyer promoting reserve values and Bushcare activities and inviting group membership | H | Work with Council on developing leaflet and distribute to neighbours and community generally | 2013 |
| Undertake Lantana control along Northern boundary in red zone, between Yeovil Drive and creek vegetation and undertake buffer planting with pioneer and longer lived species | H | <ul style="list-style-type: none"> • Council and CSO teams to spray and manually control Lantana leaving dead canes on the ground • Bushcare Group to plant buffer areas | 2013 - 14 |
| Mulch out the road reserve and plant out the southern side of road verge with street trees | | <ul style="list-style-type: none"> • Council to spray road verge and mulch • Bushcare Group to plant street trees • Bushcare group and Council to maintain | 2013-14 On- going |
| Commence bush regeneration action in green and blue coded area in Southern, Eastern and Western sections of the reserve according to identified priority sites (see map) | H | <ul style="list-style-type: none"> • Weed control activities to target priority weed species according to impact on biodiversity and according their ability to spread as follows: <ul style="list-style-type: none"> ○ Lantana ○ Small and Large Leaf Privet ○ Moth Vine ○ Japanese Honeysuckle ○ Morning Glory | 2014 - 16 |

| GROUP ACTION (these should relate to your project description) | PRIORITY | METHOD | TIME |
|---|-----------------|---|---------------|
| | | ○ Passionfruit | |
| Undertake follow up maintenance weed control in blue and green coded areas and maintain the buffer plantings on the North – Western boundary of the reserve | H | Watering, mulching, hand weeding and replanting as a long-term undertaking | On-going |
| Move into the remaining orange coded areas, areas of poor condition, when the weed control and regeneration works in the green and blue zones are stable and only requiring minimal maintenance - Access if any revegetation is required | M | Access progress before moving in next stage | 2017 On-going |
| Move into remaining the red coded areas, very poor condition when all other areas in the reserve have stabilised and only minimal maintenance is required. Need to access revegetation/re-fabrication works as required in these very poor condition bushland areas | L | Access progress before moving into the next stage | 2020 On-going |
| Upgrade walking track system | L | Improve track surface and creek crossing. Mow and maintain section of track through weedy area on Yeovil Drive side | As required |
| Remove rubbish | H | Hand removal. Council to transport rubbish to tip | On-going |

3. LOWER MULGEN CREEK BUSHCARE GROUP ACTION PLAN MAP – Condition of Bushland Mapping - (see Tables 1 and 2 for colour code interpretation)

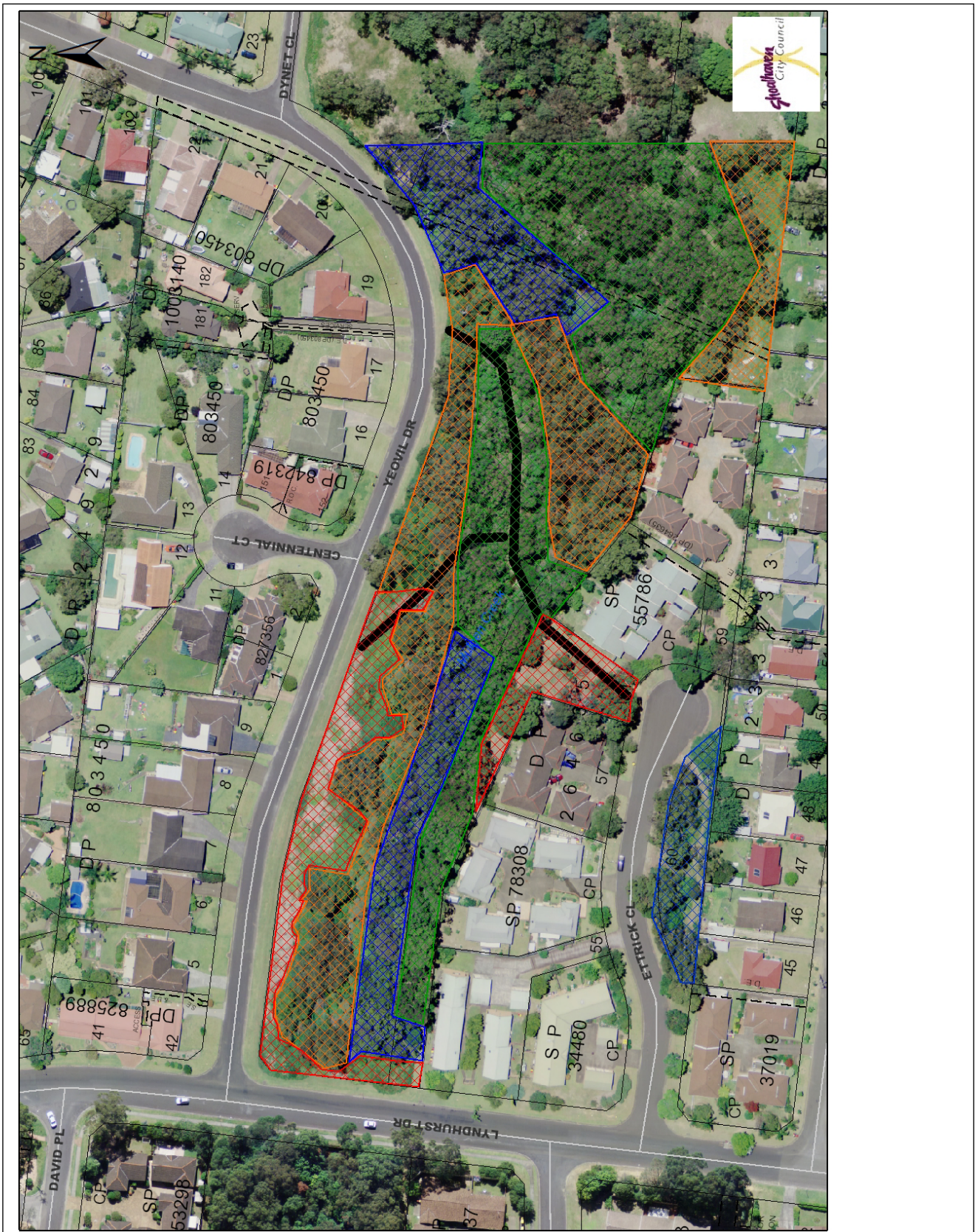


TABLE 1: Condition of Bushland Colour Code

| COLOUR CODE | CONDITION OF BUSHLAND | DESCRIPTION | INTERVENTION REQUIRED |
|--------------------|------------------------------|--|------------------------------|
| GREEN | GOOD | Virtually weed free – healthy native community (0-10% weed) | 1. Minimal |
| BLUE | FAIR | Minor infestation of weeds (10-30%weed) | 2. Low |
| ORANGE | POOR | Severely infested – regeneration of native species being suppressed (30-70% weed) | 3. Medium |
| RED | VERY POOR | Bushland replaced by exotic species OR only mature specimens of highest stratum remain – no seedlings or saplings due to infestation by exotics (70-100% weed) | 4. Medium or High |

TABLE 2: Degree of Intervention Required

| LEVEL OF INTERVENTION | DESCRIPTION |
|------------------------------|---|
| Minimal (Green) Level 1 | Resilience high. Removal of scattered weed & prevention of future impacts may be required |
| Low (Blue) Level 2 | Resilience high to medium. Removal of scattered weed and active management of impacts required |
| Medium (Orange) Level 3 | Resilience impaired but existent. Removal of weeds and removal of impacts required |
| High (Red) Level 4 | Resilience low or seriously limited – may need reconstruction, fabrication or reinstatement to approximate the original ecosystem |

4. BUSHCARE GROUP WHS & EQUIPMENT REQUIREMENTS

| Type of Activity | Yes | SWMS name included |
|--|-----|--------------------|
| Manual weed control (cut & paint, scrape and paint etc) | √ | SWMS1127 |
| Chemical control (spraying of herbicides) | √ | SWMS1127 |
| Planting | √ | SWMS997 |
| Minor construction (walking track, fencing, outdoor furniture) | | |
| Propagation & seed collection | √ | SWMS997 |
| Education (school groups, field days etc) | √ | |
| Other | | |

5. COUNCIL SUPPORT

Provide plants, mulch, tools, chemicals, spraying equipment, water trailer and other equipment and materials as required and agreed to;

- Supply chemical bottles and pouches for secateurs;
- Assist with design and printing of leaflet;
- Assist with training activities;
- Assist with seeking grants;
- Provide initial risk assessment awareness session

6. HAS A SITE HAZARD AND RISK ASSESSMENT BEEN COMPLETED FOR THE BUSHCARE SITE?

Yes √ No

7. LIST THE PERSONAL PROTECTION EQUIPMENT REQUIRED FOR VOLUNTEERS WHILST WORKING ON THE SITE

| PPE Equipment Required | Date issued |
|------------------------|-------------|
| First Aid Kit | August 2013 |
| Gloves | August 2013 |
| Sunscreen | August 2013 |
| Insect repellent | August 2013 |

8. POSSIBLE FUTURE FUNDING

| Project | Funding source |
|---|-------------------------|
| Assistance with primary weed control from bush regeneration contractors | State or Federal Grants |

9. PLAN WILL BE REVIEWED EVERY THREE YEARS

Next review due:

...../...../.....

10. PLEASE LIST OTHER LOCAL OR REGIONAL MANAGEMENT PLANS OR STRATEGIES THAT THIS PLAN RELATES TO

| Name of document | Year it was produced | Produced by |
|--|----------------------|-----------------------------|
| Generic Community Plan of Management – Natural Areas | 2001 | Shoalhaven City Council |
| Mulgen Creek Bushcare Group Action Plan | 2008 | Mulgen Creek Bushcare Group |
| | | |

11. RECOMMENDED PLANTING/REVEGETATION SPECIES LIST

| OVERSTOREY TREES | |
|---|---------------------------|
| Botanical | Common |
| <i>Eucalyptus globoidea</i> | White Stringybark |
| <i>Eucalyptus piperita</i> | Sydney Peppermint |
| <i>Eucalyptus sclerophylla</i> | Hard-leaved Scribbly Gum |
| <i>Eucalyptus imitans</i> | Yalwal Stringybark |
| <i>Eucalyptus obliqua?</i> | Messmate |
| <i>Corymbia gummifera</i> | Red Bloodwood |
| <i>Glochidion ferdinandi</i> | Cheese Tree |
| <i>Acacia elata</i> | Cedar Wattle |
| <i>Acacia binervata</i> | Two-veined Wattle |
| <i>Acacia mearnsii</i> | Black Wattle |
| <i>Melia azedarach</i> | White Cedar |
| <i>Allocasuarina littoralis</i> | Black She-oak |
| <i>Pittosporum undulatum</i> | Sweet Pittosporum |
| <i>Brachychiton acerifolius</i> | Illawarra Flame |
| <i>Ficus rubiginosa</i> | Port Jackson Fig |
| SHRUBS | |
| Botanical | Common |
| <i>Leptospermum polygalifolium</i> | Yellow Teatree |
| <i>Ceratopetalum gummifera</i> | Christmas Tree |
| <i>Pittosporum revolutum</i> | Rough-fruited Pittosporum |
| <i>Melaleuca lineariifolia</i> | Snow in Summer |
| <i>Breynia oblongifolia</i> | Coffee Bush |
| <i>Cyathea cooperi</i> | Rough Tree Fern |
| <i>Daviesia acicularis</i> | Bitter Pea |
| <i>Dodonaea triquetra</i> | Common Hop Bush |
| <i>Platylobium formosum</i> | Handsome Flat Pea |
| <i>Goodenia ovata</i> | Sticky-leaved Goodenia |
| <i>Pimelia linifolia</i> | Slender Rice Flower |
| <i>Asplenium australasicum</i> | Birds Nest Fern |
| <i>Acacia suaveolens</i> | Sweet-scented Wattle |
| <i>Acacia terminalis</i> | Sunshine Wattle |
| <i>Lambertia Formosa</i> | Mountain Devil |
| <i>Persoonia levis</i> | Broad-leaved Geebung |
| <i>Lomatia silaifolia</i> | Crinkle Bush |
| <i>Hakea salicifolia</i> | Willow-leaved Hakea |
| <i>Hibbertia dentata</i> | Twining Guinea Flower |
| <i>Omalanthus populifolius</i> | Native Poplar |
| UNDERSTOREY (grasses, herbs, climbers) | |
| Botanical | Common |
| <i>Themeda australis</i> | Kangaroo Grass |
| <i>Lomandra longifolia</i> | Spiny-headed Mat Rush |
| <i>Lomandra confertifolia</i> | Mat Rush |
| <i>Dianella caerulea</i> | Blue Flax Lily |
| <i>Smilax glycyphylla</i> | Native sarsaparilla |
| <i>Pandorea pandorana</i> | Wonga-Wonga Vine |
| <i>Ghania siebriana</i> | Sword Sedge |

12. SITE WEED LIST

| Noxious | Environmental | Control Method |
|---------------------|--|-----------------------|
| Crofton Weed | Broadleaf Dock | |
| Lantana | Camphor Laurel | |
| Mist Flower | Coriopsis | |
| Large-leaved Privet | Couch | |
| Small-leaved Privet | Fishbone Fern | |
| | Indian Hawthorn | |
| | Japanese Honeysuckle | |
| | Morning Glory | |
| | Moth Vine | |
| | Ochna | |
| | Paddys Lucerne | |
| | Passionfruit | |
| | <i>Senna pendula</i> var. <i>glabrata</i> - Cassia | |
| | Morning Glory | |
| | Moth Vine | |
| | Star Jasmine | |
| | Stinking Roger | |
| | Tree of Heaven | |
| | White Veldt Daisy | |
| | Star Jasmine | |

13. BUSHCARE SITE SPECIES LIST

| OVERSTOREY TREES | |
|------------------------------------|---------------------------|
| Botanical | Common |
| <i>Eucalyptus globoidea</i> | White Stringybark |
| <i>Eucalyptus piperita</i> | Sydney Peppermint |
| <i>Eucalyptus sclerophylla</i> | Hard-leaved Scribbly Gum |
| <i>Corymbia gummifera</i> | Red Bloodwood |
| <i>Glochidion ferdinandi</i> | Cheese Tree |
| <i>Acacia elata</i> | Cedar Wattle |
| <i>Acacia binervata</i> | Two-veined Wattle |
| <i>Acacia mearnsii</i> | Black Wattle |
| <i>Melia azedarach</i> | White Cedar |
| <i>Allocasuarina littoralis</i> | Black She-oak |
| <i>Pittosporum undulatum</i> | Sweet Pittosporum |
| <i>Brachychiton acerifolius</i> | Illawarra Flame |
| SHRUBS | |
| Botanical | Common |
| <i>Leptospermum polygalifolium</i> | Yellow Teatree |
| <i>Ceratopetalum gummifera</i> | Christmas Tree |
| <i>Pittosporum revolutum</i> | Rough-fruited Pittosporum |
| <i>Melaleuca lineariifolia</i> | Snow in Summer |
| <i>Breynia oblongifolia</i> | Coffee Bush |
| <i>Cyathea cooperi</i> | Rough Tree Fern |

| | |
|--|------------------------|
| <i>Daviesia acicularis</i> | Bitter Pea |
| <i>Dodonaea triquetra</i> | Common Hop Bush |
| <i>Platylobium formosum</i> | Hansome Flat Pea |
| <i>Goodenia ovata</i> | Sticky-leaved Goodenia |
| <i>Macrozamia communis</i> | Burrawang |
| <i>Pimelia linifolia</i> | Slender Rice Flower |
| <i>Asplenium australasicum</i> | Birds Nest Fern |
| <i>Acacia suaveolens</i> | Sweet-scented Wattle |
| <i>Acacia terminalis</i> | Sunshine Wattle |
| <i>Lambertia Formosa</i> | Mountain Devil |
| <i>Persoonia levis</i> | Broad-leaved Geebung |
| <i>Lomatia silaifolia</i> | Crinkle Bush |
| <i>Xanthorrhoea resinifera</i> | Grass Tree |
| <i>Hakea salicifolia</i> | Willow-leaved Hakea |
| UNDERSTOREY (grasses, herbs, orchids) | |
| Botanical | Common |
| <i>Themeda australis</i> | Kangaroo Grass |
| <i>Imperata cylindrica</i> var. <i>major</i> | Bladey Grass |
| <i>Lomandra longifolia</i> | Spiny-headed Mat Rush |
| <i>Lomandra confertifolia</i> | Mat Rush |
| <i>Dianella caerulea</i> | Blue Flax Lily |
| UNDERSTOREY (vines & climbers) | |
| Botanical | Common |
| <i>Glycine clandestina</i> | Love Vine |
| <i>Cassytha glabella</i> | Slender Devils Twine |
| <i>Smilax glyciphylla</i> | Native sarsaparilla |
| <i>Wahlenbergia gracilis</i> | Native Bluebell |
| <i>Desmodium variens</i> | |

Bushcare Group Name: Lower Mulgen Creek Bushcare Group

Coordinator Name ALLAN SHOANE

Signature Alloane

Date 28.1.13

