

Stronger Together

LLCI033-092

Y2K- A Climate Change Wildlife Highway

Macleay Landcare Network Inc



The Yarrahapinni to Killiekrankie Biodiversity Alliance (Y2K) is dedicated to reconnecting a significant wildlife corridor on private land in the Macleay and Nambucca Catchments

The issue

Large gaps in the vegetation cover on private properties in the Macleay/ Nambucca catchment boundary restrict the movement of fauna including threatened species such as Koala, phascogales, gliders and owls.

The challenge is to engage with private landholders to build their awareness and capacity to carry out property management for wildlife habitat.

The solution

To address this landscape scale issue Macleay and Nambucca Landcare Networks, Kempsey and Nambucca Shire Councils , North Coast Local Land Services, National Parks and Wildlife Service and NSW Forestry Corporation formed the Yarrahapinni to Killiekrankie Biodiversity Alliance (Y2K Alliance).

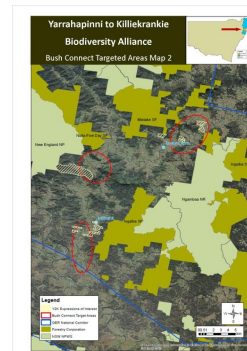
The group successfully applied to the NSW Environmental Trust for a 10 year Bush Connect Grant which MLN will manage. The \$500,000 grant will support project participants to carry out fencing, weed control and revegetation in identified gaps.

The project will also deliver numerous capacity building events for the broader community.

The impact

The project is in its first year and yet to kick off however an initial Expression of Interest process has highlighted a significant level of landholder interest in the Nambucca and Macleay communities.

The formation of the Alliance is a significant step towards a more coordinated and cohesive approach to natural resource management. each member brings skills, knowledge and resources to this and future projects.



Key facts

- The Y2K Alliance helps Landcare access funding, skills and resources
- The project aims to protect or rehabilitate 32ha of private land for wildlife

Project Partners



The Local Landcare Coordinator Initiative Program that enables the promotion of these case studies on the Gateway, is funded by the NSW Government and is supported through the partnership of Local Land Services and Landcare NSW

