



Landcare Linking Biodiversity

Ro McFarlane, Debra Butt, Murrumbateman Landcare

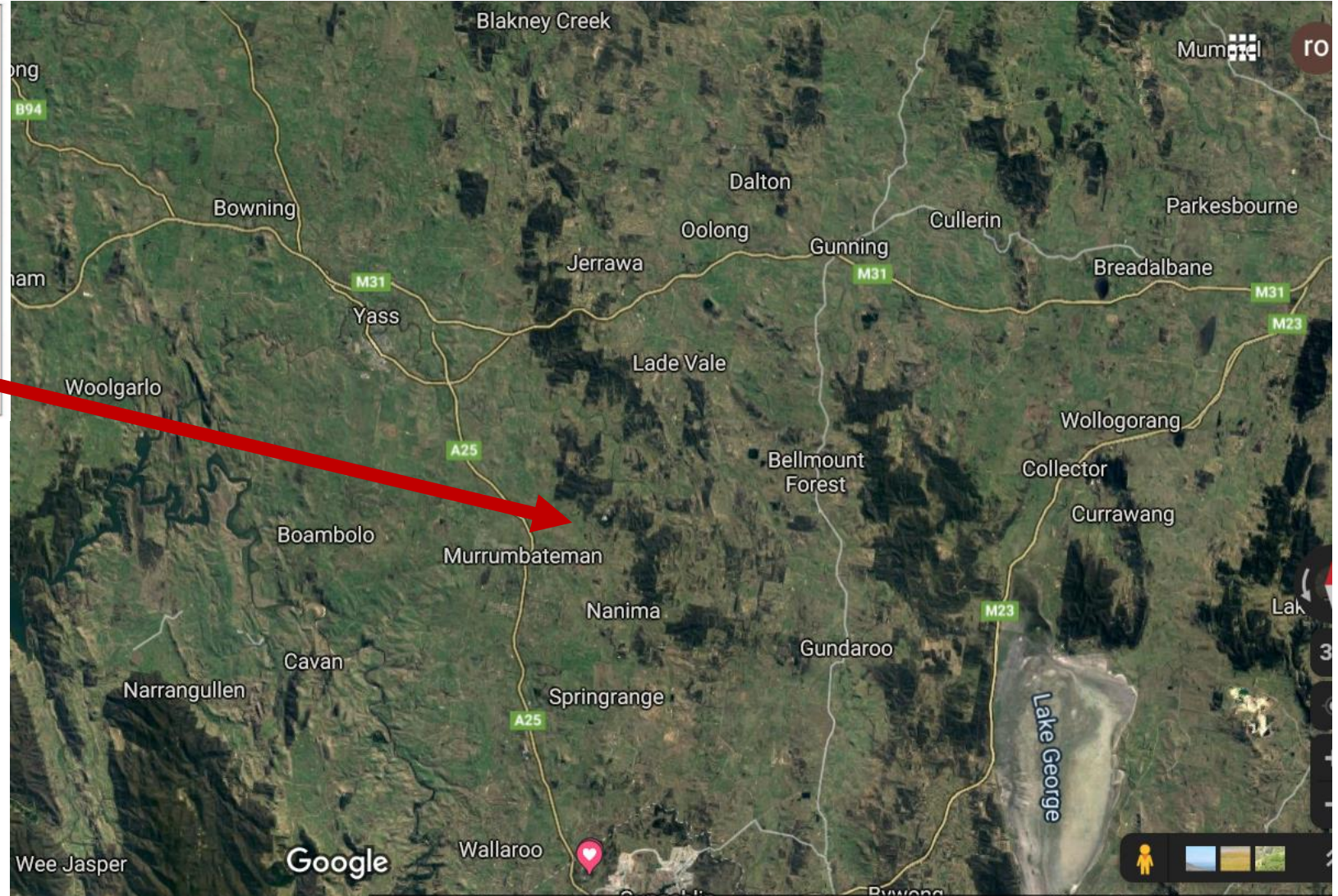
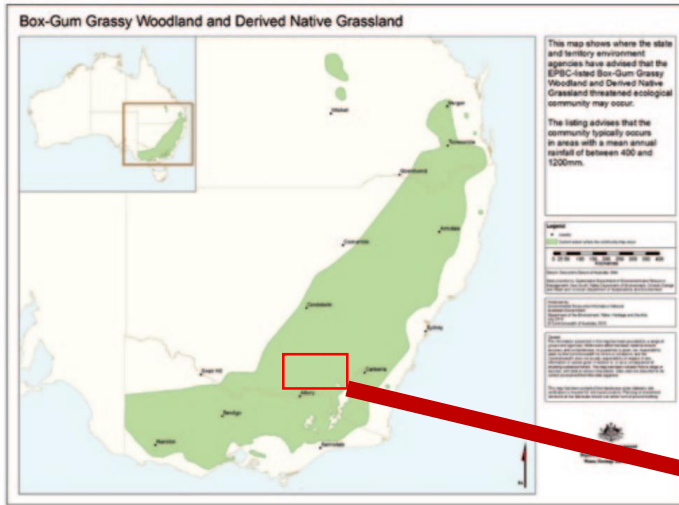
Gaps and links in the landscape

Families, Communities, Generations

Passion and vision

Science and Art

Threatened ecosystem: Box-Gum Grassy Woodlands



Jacqui Stol and Suzanne Prober (2015). **Jewels in the Landscape: Managing very high conservation value ground-layers in Box-Gum Grassy Woodlands** CSIRO, Canberra <https://doi.org/10.4225/08/584af27d438a3>





Picaree Hill

Glenlee, 2004: 1000 acres fenced, baited, tracked and conserved for future generations

Lindsay and Christine Butt

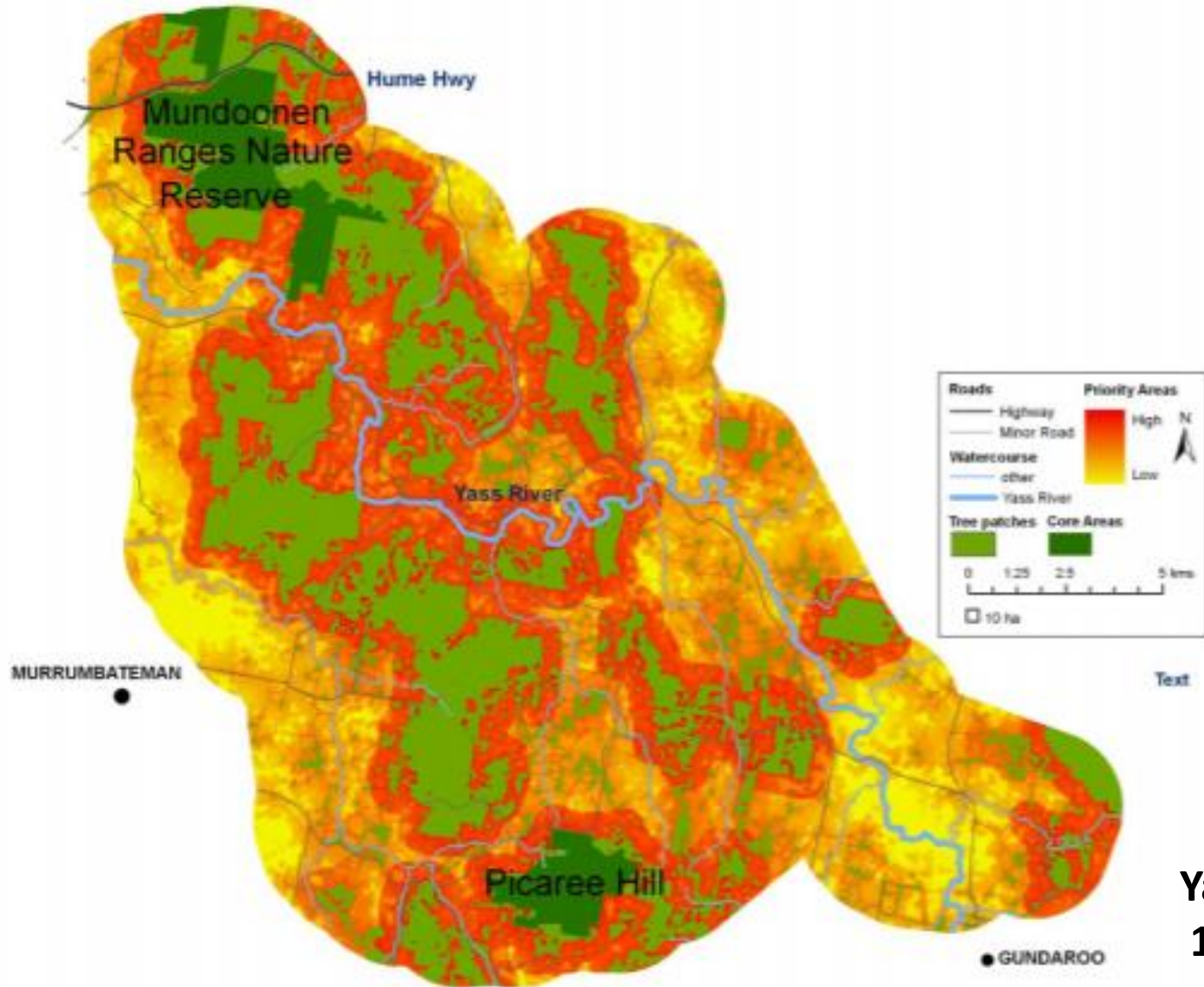
<http://www.abc.net.au/local/stories/2007/11/23/2099042.htm>



Artwork by Jess Foster, granddaughter, aged 11, of the Little Eagle for the Canberra Region Threatened species competition



Priority Areas



**Yass Tribune
10 July 2010**



Jenny Langridge, self and daughter Xanthe Pick (and her 2018 painting of a bulbine lily)



Australian Government



Murrumbidgee Catchment Management Authority



MURRUMBATEMAN LANDCARE GROUP Inc.





Connecting corridors



Buffers , protection and enhancement of remnants



Scattered trees and shrubs planting understory

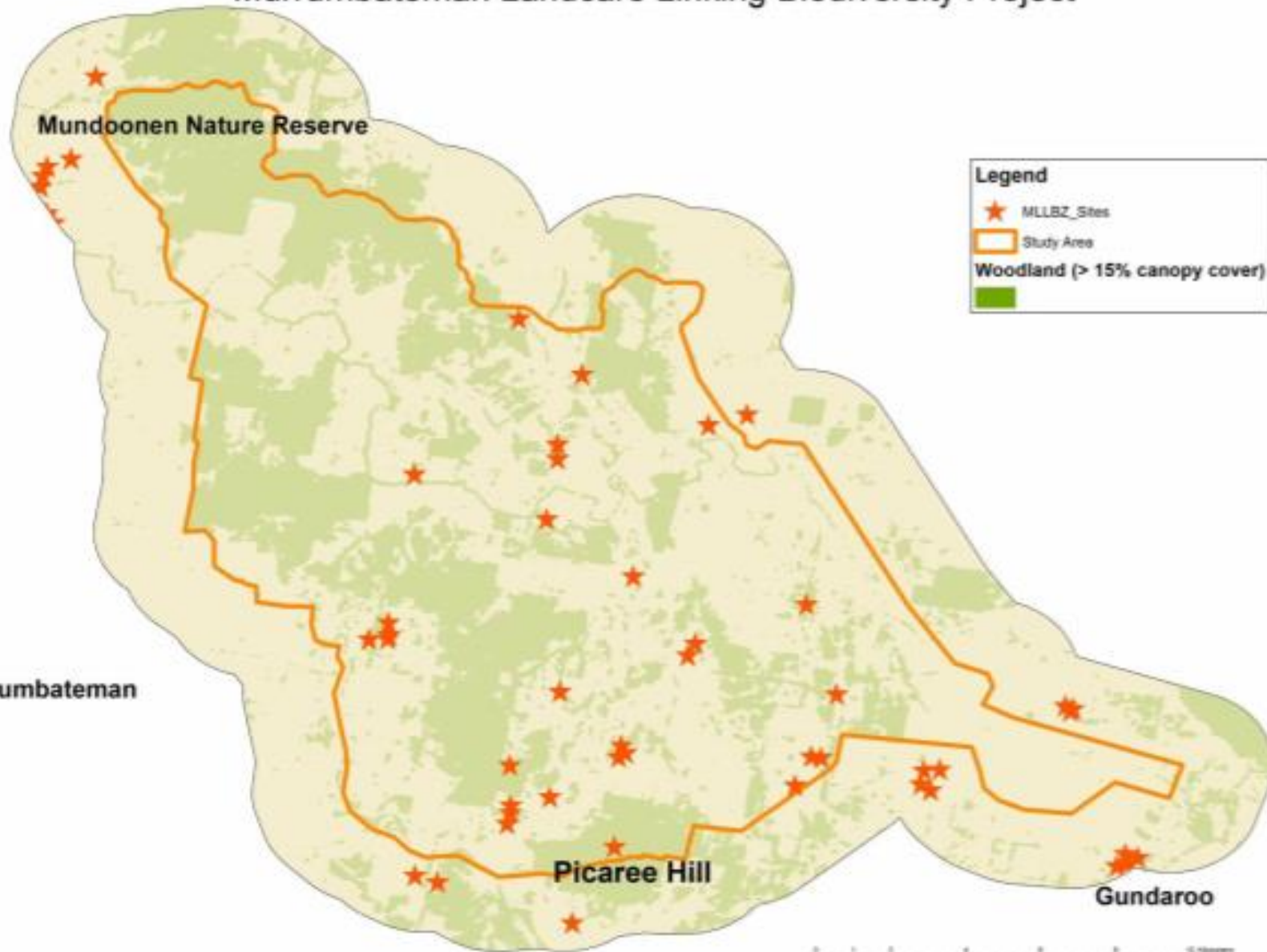


Protecting paddock trees

Changed management:
Reducing grazing pressure, resting, pulse grazing, limiting fertilizer application



Murrumbateman Landcare Linking Biodiversity Project



Response

56 EOI's resulted from our mail out.

46 landowners received a site visit to discuss options.

38 Landowners signed up to a 10 year land managers agreement to undertake onground activities.

Targets

Ecologically connected biodiverse planting – 600ha actual 440ha

Protect and enhance native vegetation 1300ha actual 1668ha

Manage threats to biodiversity-600ha actual 843ha



- 18km of conventional fencing
- 12,800 tubestock planted
- 38km direct seeding (over 10,000 stems)
- seedcollection
- Bird and wildflower walks

Thanks to all the landholders,
Landcare members, nursery,
planting volunteers and Greening
Australia (esp. Jeni de Landre)

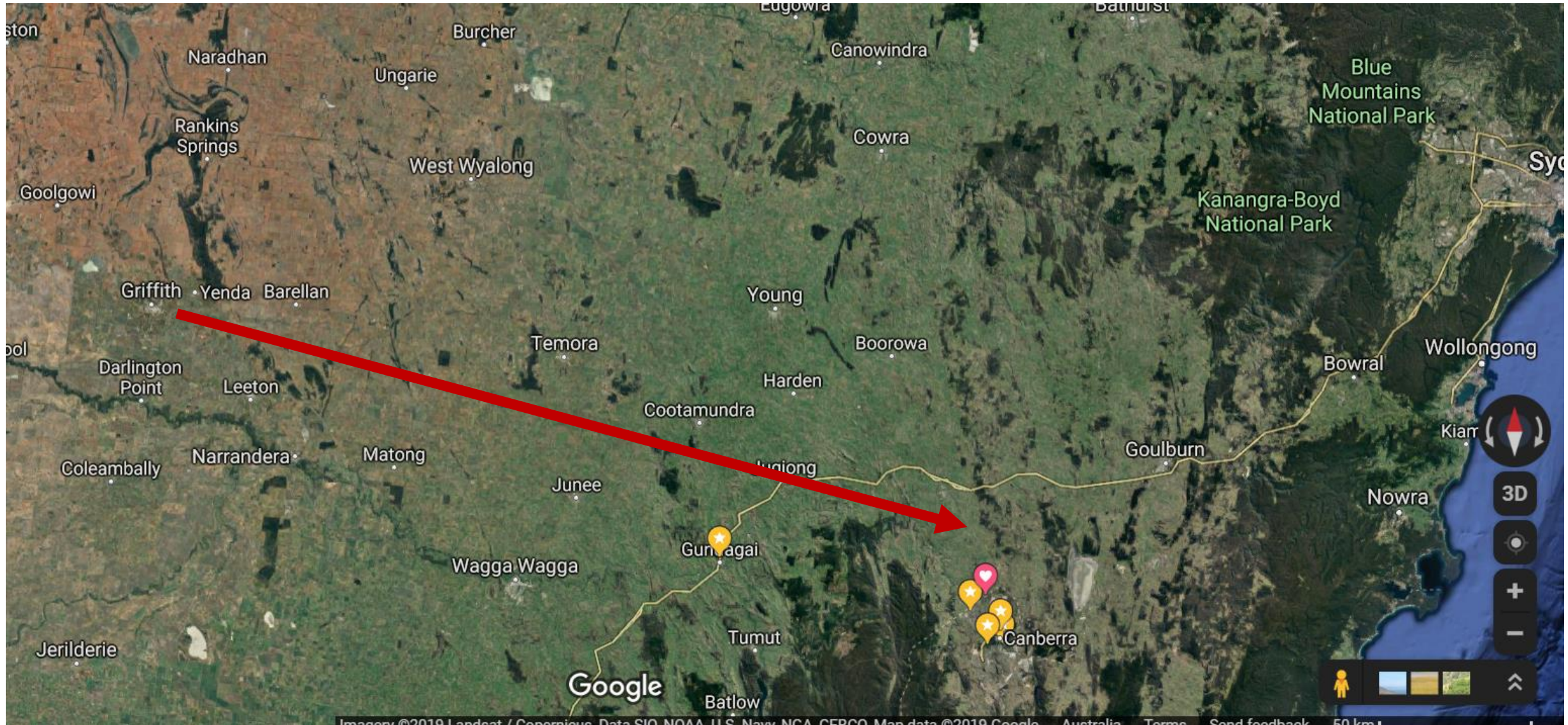


Jeni de Landre

Current projects



The future: if its 2° warmer will our plantings survive?







Sally Mumford 2018





Sally Mumford 2018

Thankyou

