



## PENGUIN HEAD BUSHCARE ACTION PLAN

**Document Number:** D12/109158 • **Adopted:** 23/11/2012 • **Minute Number:** MIN12.1296  
• **File:** 26279E • **Produced By:** City Services & Operations Group •  
**Review Date:** 23/10/2015

### CONTACT INFORMATION

<b>Group Name:</b>	Penguin Head Bushcare Group
<b>Contact:</b>	Ken & Mona Sutton
<b>Tel:</b>	4447 2042
<b>Reserve Name:</b>	Culburra Beach, Penguin Head
<b>Reserve No:</b>	CCU267
<b>Land Tenure:</b>	Shoalhaven City Council
<b>Comm. Land Type:</b>	Natural Area Foreshore

### 1. BUSHCARE GROUP GOALS

**Aim:**

To maintain and preserve existing vegetation between the beach and urban interface from 176 to 184 Penguin Head Rd, Culburra Beach.

**Objectives:**

To reduce further weed disturbance into revegetated areas by target weeding Cape Ivy, Climbing Groundsel, Asparagus Fern, Bitou Bush, Senna and Sea Spurge.

Increase community awareness about not dumping garden escapees into bushland reserves through letter box drops and on ground communication.

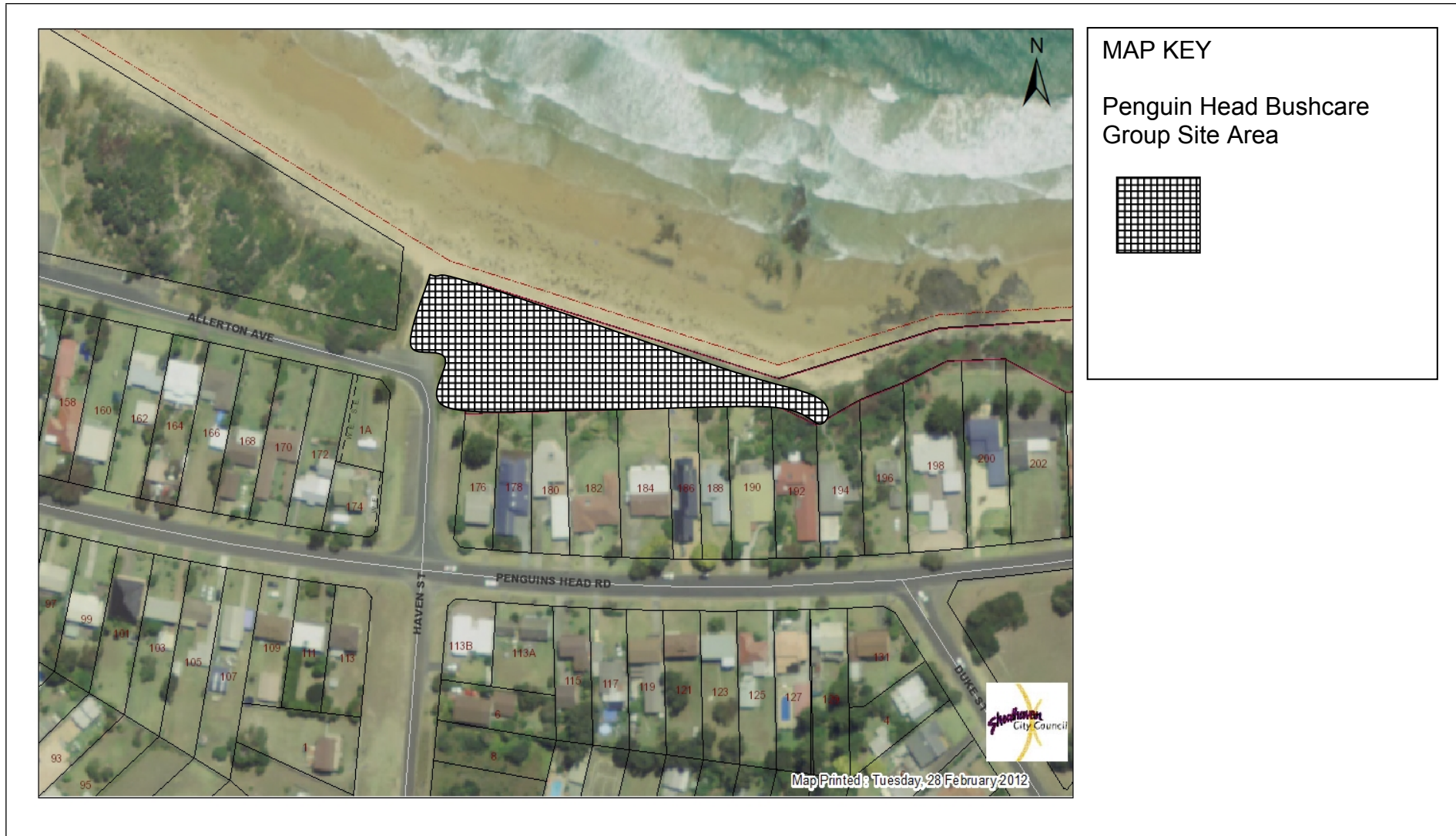
Council to provide assistance with spraying Cape Ivy, Climbing Groundsel and Asparagus Fern reducing spread into less weed infested areas.

**2. SHOALHAVEN BUSHCARE GROUP ACTIVITIES TABLE (to be in conjunction with attached site map)**

**NOTE: Priority should be rated as H = High (within 12 months); M = Medium (1-3 years); L = Low**

<b>GROUP ACTION</b>	<b>PRIORITY</b>	<b>METHOD</b>	<b>TIME</b>
Maintain existing native vegetation in front of houses. Target weed Cape Ivy, Climbing Groundsel, Bitou Bush regrowth, Senna, Asparagus Fern and Lions Tail,	H	<ul style="list-style-type: none"> <li>• Hand remove Cape Ivy and climbing groundsel around natives. (Canopy Protection) Spot Spray glyphosate</li> <li>• Cut/Paint woody weeds with glyphosate</li> <li>• Hand crown Asparagus fern, removing rhizome/ spot spray with glyphosate/ pulse</li> </ul>	On going
Council to assist with spraying large infestations of Climbing Groundsel and Cape Ivy. Contain to drainage line west of 176 Penguin Head Rd and East of 184 Penguin Head Road.	H	Council to spray	On going
Letter box drops to local residents promoting bushcare/informing of garden dumping and encroachment onto council reserves.	M		On going
Species enrichment planting/ replacement of vandalised trees.	M	Planting into niches where weeds have been removed (see attached species planting recommendation)	On going

### 3. PENGUIN HEAD BUSHCARE GROUP ACTION PLAN MAP



#### 4. BUSHCARE GROUP WHS & EQUIPMENT REQUIREMENTS

Type of Activity	Yes	SWMS name included
Manual weed control (cut & paint, scrape and paint etc)	√	SWMSNR040 Weed Control Activities
Chemical control (spraying of herbicides)	√	SWMSNR040 Weed Control Activities
Planting	√	SMSNR030 Planting Propagation & Seed Collection
Minor construction (walking track, fencing, outdoor furniture)		
Propagation and seed collection		
Education (school groups, field days etc)		
Other		

#### 5. COUNCIL SUPPORT

- a. Technical advice and support
- b. Provision of PPE equipment
- c. Supply tools, herbicide, plants, guards, stakes, water crystals and materials within the constraints of budget
- d. Administration support
- e. Assistance with grant application, administration and management.
- f. Supply of water cart for watering plants
- g. Graphic design and printing assistance
- h. Assistance with facilitation and negotiation with third parties

#### 6. HAS A SITE HAZARD AND RISK ASSESSMENT BEEN COMPLETED FOR THE BUSHCARE SITE?

Yes

**7. LIST THE PERSONAL PROTECTION EQUIPMENT REQUIRED FOR VOLUNTEERS WHILST WORKING ON THE SITE**

<b>PPE Equipment Required</b>	<b>Date issued</b>
First Aid Kit	2010
Gloves	2010
Sunscreen	2010
Insect repellent	2010

**8. POSSIBLE FUTURE FUNDING**

<b>Project</b>	<b>Funding source</b>
N/A	

**9. PLEASE LIST OTHER LOCAL OR REGIONAL MANAGEMENT PLANS OR STRATEGIES THAT THIS PLAN RELATES TO**

<b>Name of document</b>	<b>Year it was produced</b>	<b>Produced by</b>
Shoalhaven Foreshore Reserves Policy	2005	Shoalhaven City Council

## 10. RECOMMENDED PLANTING/REVEGETATION SPECIES LIST

OVERSTOREY TREES	
Botanical	Common
<i>Acacia longifolia</i>	Golden Wattle
<i>Casuarina glauca</i>	Swamp Oak
<i>Banksia integrifolia</i>	Coastal Banksia
<i>Myoporum boninense</i>	Boobialla
SHRUBS	
Botanical	Common
<i>Breynia oblongifolia</i>	Breynia
<i>Correa alba</i>	White Correa
<i>Leucopogon parviflorus</i>	Coastal Beard-Heath
<i>Melaleuca hypericifolia</i>	Hillock Bush
<i>Monotoca eliptica</i>	Pigeon Berry Ash
<i>Westringia fruticosa</i>	Coastal Rosemary
UNDERSTOREY (grasses, herbs, climbers)	
Botanical	Common
<i>Carpobrotus glaucescens</i>	Pig Face
<i>Crinum pedunculatum</i>	Crinum Lily
<i>Dianella congesta</i>	Native Flax
<i>Hibertia scandens</i>	Native Guinea Flower
<i>Isolepis nodosa</i>	Sedge
<i>Lomandra longifolia</i>	Mat Rush
<i>Pelargonium australe</i>	Coastal Geranium
<i>Rhagodia candolleana</i>	Salt Bush
<i>Scaevola calendulacea</i>	Native Fan Flower
<i>Themeda australis</i>	Kangaroo Grass

## 11. SITE WEED LIST

Noxious	Environmental	Control Method
Crysanthemoides monilifera (Bitou Bush)		Cut /Paint with glyphosate, hand pull seedlings
	Asparagus aethiopicus (Asparagus Fern)	crown out rhizome, spot spray with glyphosate/ pulse mix
	Delairea odorata (Cape Ivy)	Hand remove/ spray 1:100 roundup with pulse
	Euphorbia paralias (Sea Spurge)	Hand remove/ bag seed/( * wear protective gloves)
	Leonotis leonurus (Lions Tail)	Hand remove/ spray 1:100 roundup with pulse
	Passiflora sp (Pasionfruit)	Hand pull

	Senecio angalatus (Climbing groundsel)	Hand remove/ spray 1:100 roundup with pulse
	Senna pendula (Cassia)	cut /Paint with glyphosate, hand pull seedlings
	Stenotaphrum secundatum (Buffalo Grass)	Spot spray 1:100 Glyphosate

## 12. BUSHCARE SITE SPECIES LIST

<b>OVERSTOREY TREES</b>	
<b>Botanical</b>	<b>Common</b>
<i>Acacia longifolia</i>	Golden Wattle
<i>Banksia integrifolia</i>	Coastal Banksia
<b>SHRUBS</b>	
<b>Botanical</b>	<b>Common</b>
<i>Breynia oblongifolia</i>	Breynia
<i>Correa alba</i>	White Correa
<i>Myoporum boninense</i>	Coastal Boobialla
<i>Westringia fruticosa</i>	Coastal Rosemary
<b>UNDERSTOREY (grasses, herbs, orchids)</b>	
<b>Botanical</b>	<b>Common</b>
<i>Carpobrotus glaucescens</i>	Pig Face
<i>Crinum pedunculatum</i>	Crinum Lily
<i>Isolepis nodosa</i>	Sedge
<i>Lomandra longifolia</i>	Mat Rush
<i>Pelargonium australe</i>	Coastal Geranium
<i>Rhagodia candolleana</i>	Salt Bush
<i>Spinifex sericeus</i>	Beach Spinifex
<i>Urtica incisa</i>	Stinging Nettle

**Bushcare Group Name:** .....

**Coordinator Name:**.....

**Signature:** .....

**Date:** ...../...../.....