



Shoalhaven
City Council

MANYANA -CUNJARONG POINT BUSHCARE GROUP ACTION PLAN

CONTACT INFORMATION

Group Name:	Red Head Villages Bushcare Group
Contact:	Gary Barton
Address:	29 The Battlement Drive, Manyana, NSW, 2539
Phone:	(02) 4456 1654 or 0408 606 330
Email:	b280271@bigpond.com
Reserve Name:	Cunjarong Point, Manyana Beach, Inyadda Beach and Washerwomens Beach
Reserve Number:	SCP903, SCM779, SBE809 & SBE888
Land Tenure:	Crown Land TM & SCC
Comm. Land Type:	Natural Area – Foreshore & Bushland

1. BUSHCARE GROUP GOALS

Aim:

To enhance the environmental quality of Cunjarong Point through the maintenance and rehabilitation of natural areas.

Goals:

- Reduce weed infestations and maintain bushland areas through weed removal and natural regeneration of native species
 - **Priority weeds:** Cassia, Bitou Bush, Moth Vine, Lantana, Mother of Millions, Cestrum, Mile a Minute, Dolichos Pea, Turkey Rhubarb.
 - **Secondary weeds:** Asparagus Fern, Passionfruit Vine, Sea Spurge, Cape Daisy, Honey Suckle, Mirror Bush, Bridal Creeper
- Maintain past works through regular monitoring, eliminating the threat of reinfestation
- Maintain funding avenues through the application of grant funding
- Increase and maintain volunteer numbers within the group

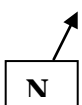
2. SHOALHAVEN BUSHCARE GROUP ACTION PLAN CUNJURONG POINT - To be in conjunction with attached site map.

NOTE: priority should be rated as H = High (within 12 months); M = Medium (1-3 years); L = Low

CUNJURONG POINT			
GROUP ACTION (these should relate to your project description) <i>Please note that actions are typically specific to weeds rather than an area.</i>	PRIORITY	METHOD	TIME
Bitou Bush	H	Regularly search all areas, particularly A1, A4 A8 A9. Cut and paint when found.	Annually
Moth Vine	H	Work in A7, A3: monitor, cut and paint, remove fruit. Monitor all areas.	Autumn each year
Cassia	H	Cut and paint to control spread. Focus on A8 A9 and around cabins. Seek additional volunteer resources to assist	Annually
Mother of Millions	H	Sprayed 2007. Follow up hand removal A3 A4.	Winter each
Asparagus Fern	M	Substantially reduced in A4, A5 and A6 Monitor and treat when detected.	Annually
Honey Suckle and Passionfruit Vine	M	Hand remove, cut and paint A3 A5.	Annually
Mirror Bush and Lantana	H	Manyana Headland –possible grant application for primary work. Splatter gun work commenced and to continue. Monitor Cunjurong Point.	When available

Seaspurge and Cape Daisy	M	A7 to Manyana – hand removal.	Shoalhaven wide Target days
Sunset Strip and Manyana Beach	H	Bitou, Cestrum, Potato vine, Moth vine treat as above.	Annually
Inyadda Point	M	Seek grant money for primary work. High risk area.	
Raising Community Awareness	M	Recruitment poster in local shop and media articles over holiday periods. Letter box drop along Alaska St to target dumping and firewood collecting.	Summer and Easter
Members increase and maintain	M	Increase awareness of Bushcare Group through advertising in local shops/community centres providing contact details for interested members.	Annually
Grant funding	M	Identify areas which require funding (above). Be aware of up and coming grants allowing sufficient time to submit application.	Annually

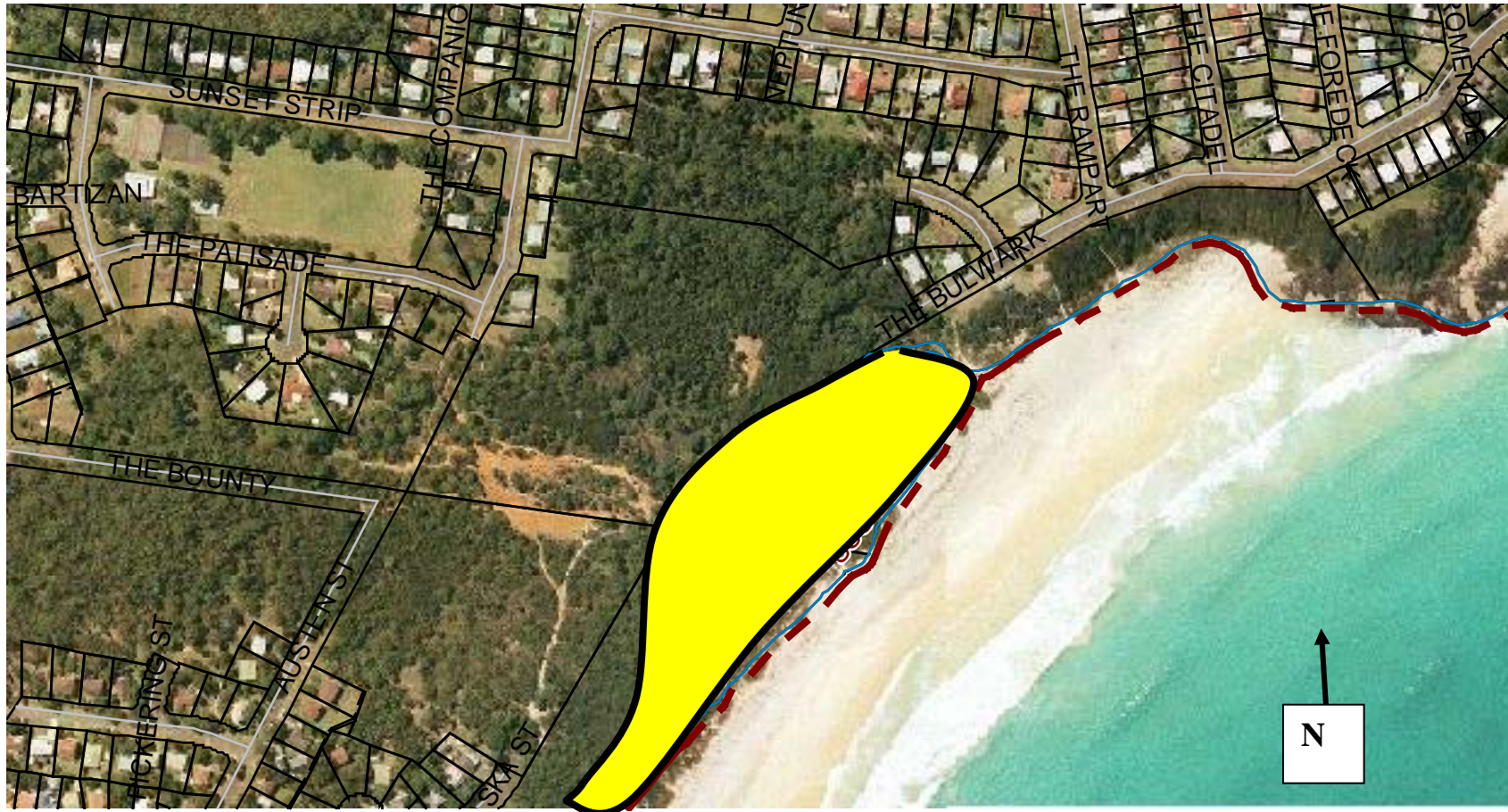
CUNJARONG POINT SITE MAP



3. **SHOALHAVEN BUSHCARE GROUP ACTION PLAN MANYANA BEACH DUNES**- To be in conjunction with attached site map.
 NOTE: priority should be rated as H = High (within 12 months); M = Medium (1-3 years); L = Low

MANYANA BEACH DUNES			
GROUP ACTION <i>(these should relate to your project description) Please note that actions are typically specific to weeds rather than an area.</i>	PRIORITY	METHOD	TIME
Bitou Bush	H	Regularly search all areas, Cut and paint when found. Or spray	Annually
Moth Vine	H	Paint, remove fruit. Monitor all areas.	Autumn each year
Cassia	H	Cut and paint to control spread.	Annually
Green Cestrum	H	Cut and paint to control spread. Seek assistance from Noxious Weeds	Annually
Asparagus Fern	M	Crown out and remove from site.	Annually

MANYANA BEACH DUNES SITE MAP



4. SHOALHAVEN BUSHCARE GROUP ACTION PLAN INYADDA BEACH DUNES/COASTAL WOODLAND & WASHERWOMENS BEACH- To be in conjunction with attached site map. NOTE: priority should be rated as H = High (within 12 months); M = Medium (1-3 years); L = Low

INYADDA BEACH DUNES & COASTAL WOODLANDS			
GROUP ACTION (these should relate to your project description)	PRIORITY	METHOD	TIME
BUSH REGENERATION/WEED CONTROL PRIORITIES			
Lantana	H	Re-treat all regrowth of Lantana by hand pulling small seedlings, cut and paint or spot spraying medium plants and splatter gun larger dense infestations	Annually for manual/cut and paint & Spring/summer for spraying
Bitou Bush	H	Regularly search all areas, Cut and paint when found. Or foliar spray	Annually
Bridal Creeper	H	With assistance from Council re-release the biological control rust fungus, <i>Puccinia myrsiphylli</i> in the hind dune area and monitor for success	Winter
Moth Vine	L	Hand pull, remove fruit. Or foliar spray Monitor all areas.	Autumn each year
Cassia	H	Cut and paint larger plants or hand pull smaller to control spread.	Annually or before flowering/fruit summer
Asparagus Fern	M	Crown out and remove from site or foliar spray with Metsulfon Methyl plus wetting agent.	Spring, Summer when in fruit and flower

INYADDA BEACH DUNES & COASTAL WOODLANDS			
GROUP ACTION (these should relate to your project description)	PRIORITY	METHOD	TIME
Access Control and Illegal Camping			
Work with Shoalhaven Council and the NSW Land and Property Authority to secure grant funding to restrict unauthorised vehicle access by the construction of an appropriate fence/and or logs/rocks along the bushland boundary adjacent to the electricity easement whilst allowing for emergency access	H	The following methods will be used: 1. Bushcare group and Council to fully cost out project 2. Council in cooperation apply for external funding 3. Council to undertake any necessary approvals required under SEPP infrastructure 4. Contact Red Head Villages Association and Rural Fire Service 5. Install fencing/vehicle barrier	2010 - 2012
Bushcare group and Council to rehabilitate illegal camping area	M	Using the following methods: 1. Clean up all rubbish and remove 2. Cap and fill illegal bores 3. Revegetate open areas with local native coastal species 4. Undertake maintenance weed control	2010 & on-going

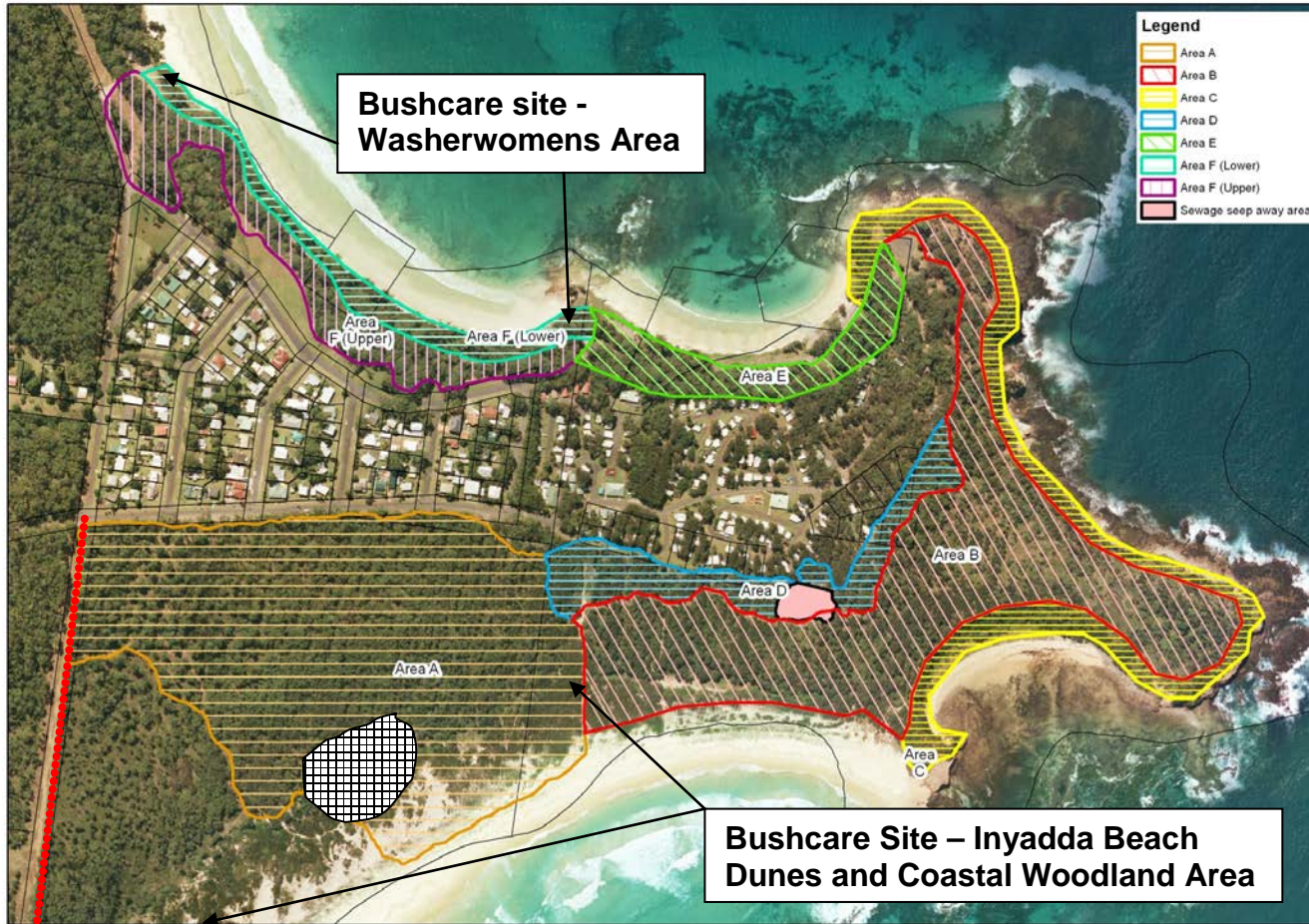
WASHERWOMENS BEACH			
GROUP ACTION (these should relate to your project description)	PRIORITY	METHOD	TIME
BUSH REGENERATION/WEED CONTROL PRIORITIES			
Lantana	H	Re-treat all regrowth of Lantana by hand pulling small seedlings, cut and paint or spot spraying larger isolated plants or	Annually for manual/cut and paint & Spring/summer for spraying
Bridal Creeper	H	With assistance from Council re-release the biological control rust fungus, <i>Puccinia myrsiphylli</i> in the hind dune area and monitor for success	Winter
Dolichos Pea and Mile a Minute	H	1. Hand removal of infestation from around and near native plants and spot spray with 1:100 glyphosate	Annually and spring/summer for spraying

SHOALHAVEN BUSHCARE GROUP ACTION PLAN INYADDA BEACH DUNES/COASTAL WOODLAND & WASHERWOMENS BEACH MAP

Key

Proposed vehicle barrier fence


Illegal Camping area

5. BUSHCARE GROUP OH&S AND EQUIPMENT REQUIREMENTS

TYPE OF ACTIVITY	SWMS NAME INCLUDED
Manual weed control (cut & paint, scrape & paint etc.)	Manual weed control Noxious weeds vegetation control
Chemical control (spraying of herbicides)	Weed control using backpack and smaller units Handling poisons
Planting	Tree removal and planting
Minor construction (walking track, fencing, outdoor furniture)	Landscaped area maintenance
Propagation & seed collection	Planting and seed collection
Education (school groups, field days etc.)	As appropriate
Other	Mowing using a tractor, ride-on or push mower

6. COUNCIL SUPPORT

- a. Assist with directing volunteer resources to the site
 - i. Assistance with sourcing, managing and reporting on grant funding
- b. Provide Bushcare group with on –site Bushcare Support Worker
- c. Provision of all PPE, tools and herbicide
- d. Provision of OH&S training and information

7. HAS A SITE HAZARD AND RISK ASSESSMENT BEEN COMPLETED FOR THE BUSHCARE SITE?

YES

Attach a copy of the site/s risk assessment to the plan.

8. LIST THE PERSONAL PROTECTION EQUIPMENT (PPE) REQUIRED FOR VOLUNTEERS WHILST WORKING ON THE SITE.

PPE EQUIPMENT REQUIRED	DATE ISSUED
First Aid Kit	2005
Gloves	2006
Sunscreen	2005
Long sleeve shirts	Own
Insect repellent	2006
Hat	Own
Sunglasses	Own
Boots	Own

9. POSSIBLE FUTURE FUNDING

PROJECT	FUNDING SOURCE
Work for the Dole and Green Corps	Greening Australia/ Job Future/Wesley Uniting etc
Mapping of high conservation vegetation areas in the Bendalong, Manyana area to prioritise bush regenerations works	SRCMA, Federal grants
Strategic coastal weed control	SRCMA
Assess site for inclusion to SEPP 26 – Access the possibility of inclusion of remnant rainforest being listed on SEPP 26	DUAP, DECCW

10. PLAN WILL BE REVIEWED EVERY THREE YEARS – NEXT REVIEW DUE: APRIL 2013

Note: The group should review a summary of the Bushcare Policy & Procedures at the time of each annual review

11. LIST OTHER LOCAL/REGIONAL MANAGEMENT PLANS OR STRATEGIES THAT THIS PLAN RELATES TO:

DOCUMENT NAME	YEAR PRODUCED	PRODUCED BY
Shoalhaven City Council Foreshore Reserves Policy	2005	Shoalhaven City Council
Generic Community Land Plan of Management - Natural Areas	2001	Shoalhaven City Council
Southern Rivers Catchment Action Plan	2006	SRCMA
Lake Conjola Estuary Management Plan	1998	Shoalhaven City Council
Shoalhaven Walking Track Strategy	2010	Shoalhaven City Council
Draft Shoalhaven Coastal Management Plan	2010	Shoalhaven City Council

12. SUGGESTED SPECIES LIST FOR FUTURE SITE REVEGETATION

OVERSTOREY TREES	
BOTANICAL NAME	COMMON NAME
<i>Acmena smithii</i>	Lilly Pilly
<i>Casuarina glauca</i>	Swamp Oak / She Oak
<i>Casuarina littoralis</i>	Black She Oak
<i>Eucalyptus botryoides</i>	Bangalay
<i>Ficus coronata</i>	Sandpaper fig
SHRUBS	
BOTANICAL NAME	COMMON NAME
<i>Acacia longifolia</i> spp. <i>longifolia</i>	Sydney Golden Wattle
<i>Breynia oblongifolia</i>	Dwarf's Apple / Coffee Bush
<i>Lomandra longifolia</i>	Spiky Matt Rush
<i>Rapanea variabilis</i>	Lismore Muttonwood
<i>Trema aspera</i>	Native Peach
UNDERSTOREY (GRASSES, HERBS, CLIMBERS)	
BOTANICAL NAME	COMMON NAME
<i>Cissus antarctica</i>	Kangaroo Vine
<i>Eustrephus latifolius</i>	Wombat Berry /
<i>Imperata cylindrica</i>	Cogongrass
<i>Kennedia rubicunda</i>	Dusty Coral Pea
<i>Parsonsia straminea</i>	Monkey Rope / Common Silkpod
<i>Stephania japonica</i>	Snake Vine / Tape Vine

13. SITE WEED LIST

NOXIOUS	OTHER	CONTROL METHOD
Chrysanthemoides monolifera spp rotundata (Bitou Bush)		Spot spray with 1:100 ratio of Glyphosate and water
Lantana camara		Hand pull; seedlings, cut and paint or spray
	<i>Asparagus aethiopicus</i> (Basket asparagus)	Crown out the rhizome and remove from site or spot spray with Metsulfon Methyl + Wetting agent
	<i>Arauja sericifera</i> (Moth Vine)	Hand pull seedlings
	<i>Brophyllum delagoense</i> (Mother of Millions)	Hand pull and remove from site
	<i>Senna pendula</i> var. <i>glabrata</i> (Cassia)	Hand pull seedlings, cut stump lager plants or spot spray with Metsulfon Methyl + Wetting agent

ATTACHMENT: GROUP SUPPORT AND SKILL DEVELOPMENT NEEDS. This information helps to identify gaps that may exist between what the group require to function effectively and what the group has available. **This focuses on the group, overall, not individual members.**

<i>Tick one box only</i>	We are absolute beginners - don't know a great deal	We know a bit - enough to get by most of the time	We know quite a lot - and we know when to seek help	There's probably not much more we can learn on this	Comments
OH&S - develop and follow risk assessment					
Develop and/or monitor Action Plan					
Plant identification -local native plants					
Weed identification and control methods					
Bush regeneration methods					
Seed collection and propagation					
Group planning and decision making					
Managing neighbour relations					
Community education - schools, neighbours, etc.					
Volunteer/group member recruitment					
Preparing grant applications					

<p>List below the 10 most common plants that are indigenous to the area:</p> <ol style="list-style-type: none"> 1. 2. 3. 4. 5. 6. 7. 8. 9. 10. 	<p>List below the 10 most common plants that are <i>not</i> indigenous to the area:</p> <ol style="list-style-type: none"> 1. 2. 3. 4. 5. 6. 7. 8. 9. 10.
<p>Can all of the regular group volunteers identify these? Yes <input type="checkbox"/> No <input type="checkbox"/></p>	<p>Can all of the regular group volunteers identify these? Yes <input type="checkbox"/> No <input type="checkbox"/></p>

BUSHCARE GROUP NAME: CUNJARONG POINT BUSHCARE GROUP
COORDINATOR NAME: GARY BARTON
SIGNATURE:
DATE: