



TAPITALLEE BUSHCARE ACTION PLAN

Document Number: D12/188629 • **Adopted:** 24 September 2013 • **Minute Number:** MIN13.990 • **File:** 26279E • **Produced By:** Planning & Development Services Group • **Review Date:** 24 September 2016

CONTACT INFORMATION

Group Name:	Tapitallee Reserve Bushcare Group
Contact:	Jo Evans
Reserve Name:	Reserve No: NIL061
Land Tenure:	SCC
Comm. Land Type:	Natural Area - Bushland

1. BUSHCARE GROUP GOALS

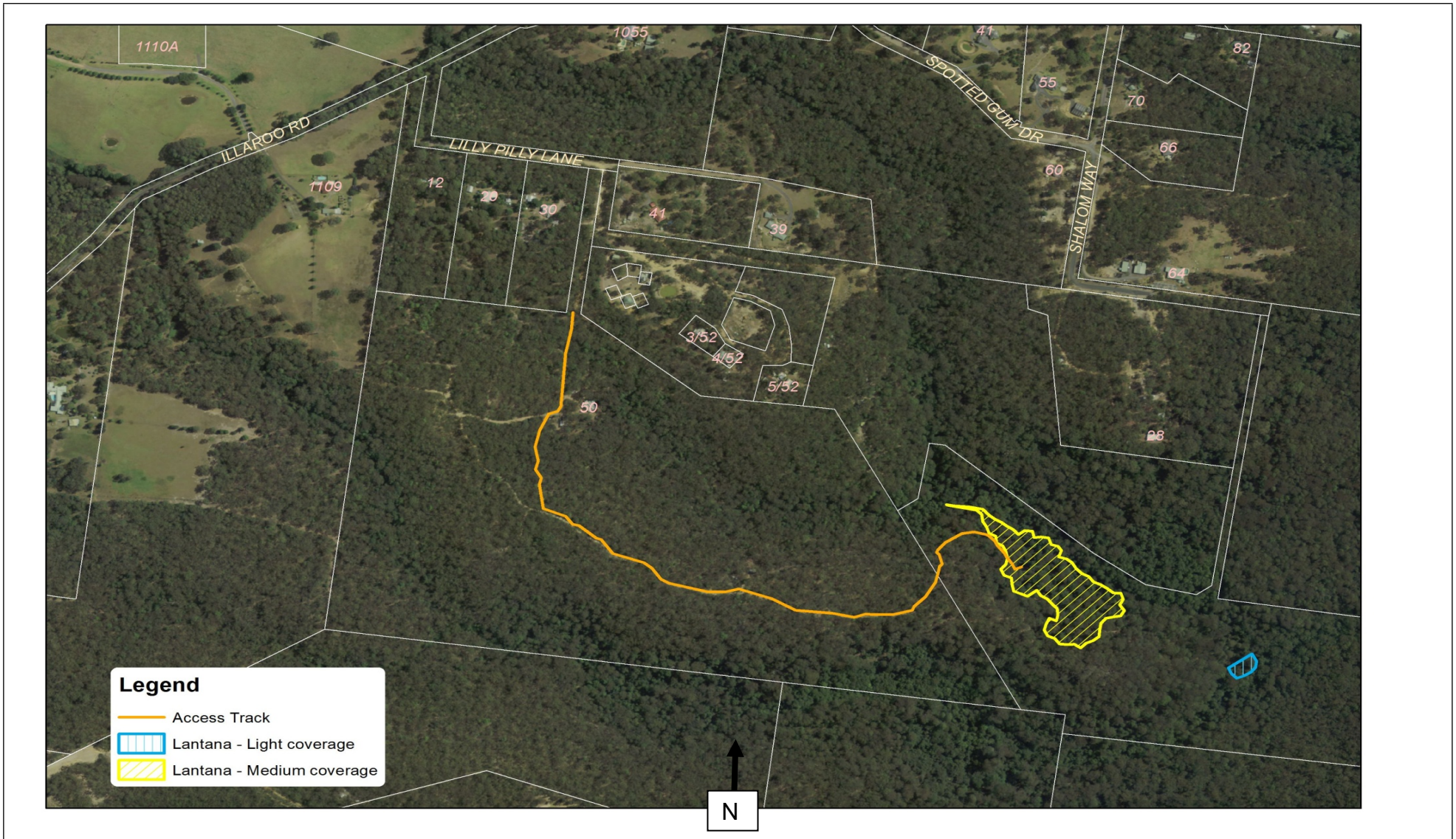
<p>Aim:</p> <p>To restore the biodiversity of the wet scloryphyll forest within the areas surrounding Lilli Pilli Lane, including the Council reserve and adjacent private land by undertaking a strategic community weed control and awareness raising program.</p>
--

2. **SHOALHAVEN BUSHCARE GROUP ACTIVITIES TABLE (to be in conjunction with attached site map)**

NOTE: Priority should be rated as H = High (within 12 months); M = Medium (1-3 years); L = Low

GROUP ACTION	PRIORITY	METHOD	TIME
Contain and reduce <i>Lantana camara</i> in creek beds and in native vegetation south of Lilli Pilli Lane	H	Council and Bushcare Group work together to train and support group in weed control technique	Growing season
Cut paths to access Lantana infestations and survey area for any other weeds	H	Using brush cutters to cut tracks and GPS locations	Winter
Control road side weed infestations along Illaroo Rd	M	GPS locations and work with Councils Noxious Weeds Officer to control Fireweed	On Going
Follow control of all identified sites	H	Review maps and monitor for outbreaks of new infestations	On Going

3. TAPITALLEE BUSHCARE GROUP ACTION PLAN MAP



4. BUSHCARE GROUP WHS EQUIPMENT REQUIREMENTS

Type of Activity	Yes	SWMS name included
Manual weed control (cut and paint, scrape and paint etc)	√	SWMSNR040 Weed Control Activities
Chemical control (spraying of herbicides)	√	SWMSNR040 Weed Control Activities
Planting		
Minor construction (walking track, fencing, outdoor furniture)		
Propagation and seed collection		
Education (school groups, field days etc)		
Other		

5. COUNCIL SUPPORT

- a. Technical advice and support
- b. Tools and First Aid kit
- c. Materials/Plants (within limit of budget)
- d. Training support
- e. Assistance with weed control and cutting access tracks

6. HAS A SITE HAZARD AND RISK ASSESSMENT BEEN COMPLETED FOR THE BUSHCARE SITE?

Yes

7. LIST THE PERSONAL PROTECTION EQUIPMENT REQUIRED FOR VOLUNTEERS WHILST WORKING ON THE SITE

PPE Equipment Required	Date issued
First Aid Kit	2009
Gloves	2009
Sunscreen	2009
Insect repellent	2009

8. POSSIBLE FUTURE FUNDING

Project	Funding source
Work with adjacent landholders, noxious weeds and Bangalee Bushcare Group to apply for funds to assist with Lantana control in the catchment	State and/or federal government

9. PLEASE LIST OTHER LOCAL OR REGIONAL MANAGEMENT PLANS OR STRATEGIES THAT THIS PLAN RELATES TO

Name of document	Year it was produced	Produced by
Generic Community Land – Plan of Management – Natural Areas	2003	Shoalhaven City Council
Catchment Action Plan	2007	Southern Rivers Catchment Management Authority

10. SITE WEED LIST

Noxious	Environmental	Control Method
Lantana camara		Hand pull or cut and paint smaller isolated plants larger infestations should be splatter gunned in the warmer growing season when plant is in flower

11. BUSHCARE SITE SPECIES LIST

OVERSTOREY TREES	
Botanical	Common
<i>Acmena smithii</i>	Lilly Pilli
<i>Corymbia gummifera</i>	Bloodwood
<i>Corymbia maculata</i>	Spotted Gum
<i>Eucalyptus agglomerata</i>	Blue Leaf Stringybark
<i>Eucalyptus paniculata ssp. paniculata</i>	Grey Ironbark
<i>Livistonia australis</i>	Cabbage Gum
<i>Syncarpia glomulifera</i>	Turpentine
SHRUBS	
Botanical	Common
<i>Acacia terminalis</i>	Sunshine Wattle

<i>Allocasuarina littoralis</i>	Forest She Oak
<i>Allocasuarina torulosa</i>	Black She Oak
<i>Banksia spinulosa</i>	Hair Pin Banksia
<i>Ceratopetalum gummiferum</i>	New South Wales Christmas Bush
<i>Indigofera australis</i>	Indigofera
<i>Kunzea ambigua</i>	Tick Bush
<i>Leptospermum polygalifolium</i>	Tanton
<i>Macrozamia communis</i>	Burrawang
<i>Notaaea longifolia</i>	Mock Olive
<i>Persoonia levis</i>	Smooth Geebung
<i>Persoonia linearis</i>	Narrow Leaf Geebung
<i>Persoonia nutans</i>	Nodding Geebung
<i>Pittosporum revolutum</i>	Rough Fruited Pittosporum
<i>Pittosporum undulatum</i>	Sweet Daphnae
<i>Stenocarpus salingnus</i>	Scrub Beefwood
<i>Synoum glandulosum</i>	Scentless Rosewood
<i>Ziera smithii</i>	Sand Fly Ziera

UNDERSTOREY (grasses, herbs, orchids)

Botanical	Common
<i>Blechnum cartilagineum</i>	Gristle Fern
<i>Clerodendrum tomentosum</i>	Clerodendrum
<i>Dianella caerulea</i>	Native Flax
<i>Dianella revoluta</i>	Native Blue Flax
<i>Helichrysum elatura</i>	White Paper Daisy
<i>Hypolepis muelleri</i>	Harsh Ground Fern
<i>Lepidosperma laterale</i>	N/A
<i>Lomandra fluviatilis</i>	N/A
<i>Lomandra longifolia</i>	Spiny Matt Rush
<i>Micolaena stipoides</i>	Weeping Grass
<i>Olearia microphylla</i>	Bridal Daisy Bush
<i>Pratia purpurascens</i>	White Root
<i>Ziera pilosa</i>	N/A

UNDERSTOREY (vines & climbers)

Botanical	Common
<i>Cissus hypoglauca</i>	Water Vine
<i>Clematis aristata</i>	Old Mans Beard
<i>Geitonoplesium cymosum</i>	Scrambling Lily
<i>Hibbertia dentata</i>	Twinging Guinea Flower
<i>Pandora pandorama</i>	Wonga Vine
<i>Stephania japonica</i>	Snake Vine

Bushcare Group Name:

Coordinator Name:.....

Signature:

Date:/...../.....