

Report on Upper Deau Catchment Group Araluen Creek Restoration Project Community Engagement for Upper Shoalhaven Landcare Council Meeting 10 February 2022

Overview

Upper Shoalhaven Landcare Council has partnered with Upper Deua Landcare Group and will be assisting the Araluen Creek Restoration Project with community educational workshops; project videography, a revegetation advice and species list, as well as using project materials for community awareness of the Bridge to Bridge project including display boards for a natural and cultural historic display walk.

Update -- Administration

- Clare Henderson has been contracted to undertake this project work for USLC
- Contract signed
- Budget in place
- Revised agreement for additional Bridge to Bridge community engagement Display Board completed in December
- Governance arrangements agreed (notably all major projects outputs with USLC logo to be approved by Jane (ie Display Boards)
- Various admin in order – insurance, super, risk assessment etc
- Clare and Larry attended the 3 December meeting of UDCG
- Clare, Larry and Erin attended the 4 February AGM and subsequent General Meeting of UDCG
- Covid safe plan for workshops being put in place

Update -- Workshops

- The first two workshops have been confirmed
- Geology on Saturday 26 February at Araluen Hall (flyer attached)
- Erosion Control Saturday 26 March (Flyer attached)
- Geology Workshop has 30 RSVPs
- Plan for other workshops in progress (see attached)

Update -- Video

- Clare Young will be engaged to produce the video
- She is confirmed for workshop on 26 February and 26 March
- Clare Henderson is compiling a list of video footage required and best way to collect that
- Video will be complete in July

Update – Re-vegetation

- Cath Harrison is organising plants and tree guards. Dates for re-vegetation to be determined after earth works schedule in place (weather dependant to some extent)) most likely late March / April
- USLC to assist with call for volunteers once date set
- Clare coordinating with Cath and Erin

Update – Bridge to Bridge

- Erin is providing Clare with details of other signage that USLC has assisted with graphic designer / production costs etc (Bombay Landcare / Mongarlowe Display Boards)
- Project Plan and outline in preparation

Upper Deua Landcare Group's Araluen Creek Restoration Project Community Engagement – 19 January 2022

Upper Shoalhaven Landcare Council has partnered with Upper Deua Landcare Group and will be assisting the Araluen Creek Restoration Project with community educational workshops; project videography, a revegetation advice and species list, as well as using project materials for community awareness of the Bridge to Bridge project including display boards for a natural and cultural historic display walk.

1) Araluen Creek Restoration Workshop Series

Five educational workshops will be available to the Araluen and broader community. These workshops will include topics such as local soils and geology, soil erosion identification and management, riparian zone management, weed control and revegetation strategies and project field day to look at erosion control activities funded by this project.

Workshop Deliverables

- Ensure a mix of landowners on large, medium and small acres are involved.
- Workshops to also enable raised awareness of the possible increase in such rain events and future resilience required.
- Seek to involve all those in the larger area who may have high flow channels. small tributaries or large tributaries and have experience significant destruction recently.
- Improved community understanding of the fragility of the Valley floor.

2) Project Videography

USLC will be engaging a videographer to work with project partners on capturing the story, expertise and learnings of this project. The visual depiction of the damage and rehabilitation strategies in the Araluen Valley will raise awareness in the local and surrounding communities about disaster recovery processes.

The video will convey options for landowners and other stream communities to consider stream rehabilitation strategies. The video should be targeted at both the general population, and landowners who have stream and ground water issues, particularly those in areas where previous degradation of the terrain has occurred. The recording of how the control structures stand up to future rain events will also assist other communities to better understand the issues and remediation strategies in relation to extreme weather events.

Objectives of the video

- To help landholders in the Araluen valley understand and take action in response to future extreme weather events; and
- To raise awareness and educate surrounding communities on important issues affecting landholders due to extreme weather events.

3) Revegetation

USLC will provide support to the project by providing revegetation support and advice, including suitable species lists, site selection and design and site preparation, planting techniques, and maintenance. USLC will provide the project participants options to use our planting equipment if needed, including our ripper, moulder and tree planter and hand-held Hamilton tree planters. USLC can also assist project participant to organise a community tree planting day if landholders need assistance.

Key Deliverables

- Community awareness of suitable vegetation that will assist in prevention of erosion.

4) Bridge to Bridge – Public Awareness and Heritage Trail – Displays and Coordination

Co-ordinate information / stories and graphics of the Bridge to Bridge project as well draw together materials from the workshops to develop display boards for the natural and cultural historic trail.

Upper Deua Landcare Group's Araluen Creek Restoration Project Workshop Series

Upper Shoalhaven Landcare Council will be assisting the Araluen Creek Restoration Project by organising five educational workshops available to the Araluen and broader community. These workshops will include topics such as local soils and geology, soil erosion identification and management, riparian zone management, weed control and revegetation strategies and a project field day to look at erosion control activities funded by the Araluen Creek Restoration Project.

For more information and to register your interest for any of the following workshops please get in touch with Clare Henderson on 0412 425 665 or via email clare.henderson@webone.com.au

Workshop One

Soil and Geology of the Araluen Region

Saturday 26 February

9am – 1.00pm

Araluen Hall

Presented by Leah Moore, Australian National University



This is a Bushfire Community Recovery and Resilience Fund project through the Joint Commonwealth/State Disaster Recovery Funding Arrangement

Are you interested in learning about the origins of the Araluen region agricultural soils and geology? Then join Upper Shoalhaven Landcare and Upper Deua Landcare and discover how the soils were formed and the geological events that preceded them.

Workshop Two

Erosion Control

Saturday 26 March 2022

9.30am – 12.30pm

856 Majors Creek Mountain Rd



Presented by Andy Taylor, South-East Local Lands Services

This workshop will provide landholders with hands-on skills and information on how to treat and prevent erosion after fire. The workshop will cover erosion processes and control techniques, it will help you to identify which control technique is best suited to your catchment size and soil type. The workshop will include low cost soil erosion techniques and more technical erosion structures.



Workshop Three

Riparian Zone Management and Aquatic Ecology

Saturday 23 April 2022 (TBC)

Presented by Rivers of Carbon and WaterWatch

This workshop will discuss riparian management options, creating healthy riparian areas, monitoring waterways, waterwatch training, riparian habitat and indicators.

Workshop Four

Weed Control and Revegetation

Saturday 28 May 2022 (TBC)

Workshop Five

Field day to visit erosion control sites

Saturday in June 2022

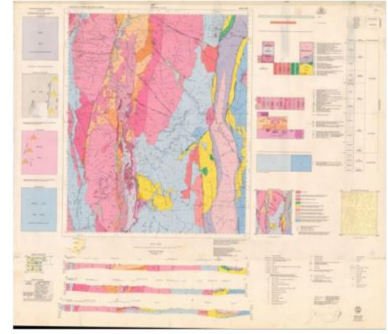
Date depends on finalisation of erosion control works

Presenter – Andy Taylor

RESCHEDULED

GEOLOGY & SOILS OF THE ARALUEN REGION

Presented by Leah Moore, Australian National University



Saturday 26th February

9:30am - 1.00pm

Araluen Hall

RSVP Required

Are you interested in learning about the origins of Araluen's
agricultural soils and geology?

Join Upper Shoalhaven and Upper Deua Landcare to discover how the region's
soils were formed and the geological events that preceded them.

Morning tea and a light lunch will be provided.

Places are limited so please RSVP by Monday 21st February to:

Clare Henderson 0412 425 665

or email upper.shoalhaven@gmail.com

This workshop is part of Upper Deua Landcare's Araluen Creek Restoration project
and will be one of a series held over the coming months.



This is a Bushfire Community Recovery and Resilience Fund project through the joint
Commonwealth/State Disaster Recovery Funding Arrangement



SAVE
THE
DATE

EROSION CONTROL WORKSHOP

SATURDAY

26TH

MARCH

9:30-12:30PM

856 MAJORS CREEK MOUNTAIN ROAD
(DIRECTIONS GIVEN UPON RSVP)

Register your interest to
Clare Henderson 0412 425 665 OR
upper.shoalhaven@gmail.com

This workshop will provide landholders with hands-on skills and information on how to treat and prevent erosion after fire.

It will cover erosion processes and control techniques and help you identify which methods are best suited to your catchment size and soil type.

The workshop will also examine low cost soil erosion techniques and more technical erosion structures.

This workshop is part of Upper Deua Landcare's Araluen Creek Restoration project.



Upper Deua
Catchment
Landcare



This is a Bushfire Community Recovery and Resilience Fund project through the joint Commonwealth/State Disaster Recovery Funding Arrangement



Local Land
Services
South East