

Report on Upper Deau Catchment Group Araluen Creek Restoration Project Community Engagement for Upper Shoalhaven Landcare Council Meeting 24 March 2022

Overview

Upper Shoalhaven Landcare Council has partnered with Upper Deua Landcare Group and will be assisting the Araluen Creek Restoration Project with community educational workshops; project videography, a revegetation advice and species list, as well as using project materials for community awareness of the Bridge to Bridge project including display boards for a natural and cultural historic display walk.

Update – General

The project has a major glitch. The big wet weather event in March led to a number of small landslides on Araluen Rd and a major one leading the road to be one-way traffic. At the recent meeting of UDCLG everyone was pretty upbeat about the works starting soon and various logistics like which source of the 400 tonnes of large rocks would be used and getting them down the mountain. But then Andy spoke to the Council and seems although no tonnage limit on the road, not a good idea to be bringing down lots of heavy materials until the road is fixed. An earlier estimate was it would take until June before works could even start. However, this week's news is that the Council has waived some tender processes to fast track the roadworks (see Braidwood Bugle article). At the moment planning on getting works done in August.

Update -- Administration

- Clare, Larry and Erin attended the 13 March General Meeting of UDCLG
- Clare met with Cath and Penny to work through the program and did various site visits.
- Will need to do an extension of Clare's contract however no variation in \$\$, just stretching the time

Update -- Workshops

- First workshop Saturday 26 February at Araluen Hall was a great event. 33 registrations with 28 attending. Some key participants could not attend to being flooded in.
- Erosion Control Saturday 26 March was cancelled on 22 March as lead presenter Andy is a Covid close contact. This is disappointing as we had 20 registrations and again a very good program lined-up, including give away coir logs and jute mesh.
- The Erosion control workshop is now scheduled for Saturday 28 May.
- Currently re-gigging the workshop schedule due to the change in project timing. Revised program will be finalised next week.

Update -- Video

- Clare Young (videographer) has now provided her detailed proposal and a summary of filming to date.
- Clare attended the February Geology workshop and then did one on one interviews with Leah (Australian National University) as well as Les Mundy one of the key landholders
- Work progressing on gathering various materials, photos, profiles, techno info to support the video
- Video will now be complete in October (subject to earthworks)

Update – Re-vegetation

- Cath Harrison is organising plants and tree guards. Dates for re-vegetation to be determined after earth works schedule in place (weather dependant to some extent)) most likely late March / April
- USLC to assist with call for volunteers once date set. Again a regig due to the change in plans. However still planning on a revegetation day in April.

Update – Bridge to Bridge Display Boards

- Clare is finalising a brief on the signs and costs for the UDCLG to consider in the near future.

Upper Shoalhaven Landcare Newsletter March 2022

Geology of Araluen Workshop

Around 30 people gathered at the Araluen Hall on Saturday, 26 February 2022 to hear **Leah Moore**, from the Australian National University, talk about the geology and soils of Araluen.

This workshop was the first in a series run as part of the Araluen Creek Restoration Project. Key elements of the project are building community engagement and expanding our understanding of soil erosion and remediation measures.

While the workshop specifically focused on the geological history of the Araluen valley, Leah emphasised the importance of understanding the geology of your local area and how water moves through the landscape. Leah suggested understanding the foundations of your landscape is vital if you want to address erosion in your local waterways, improve water quality, and make your property more drought resistant. She also highlighted various useful web-based tools that can assist with mapping the geology and soil types in your local area, such as: [E-spade](#) and [Salis](#).

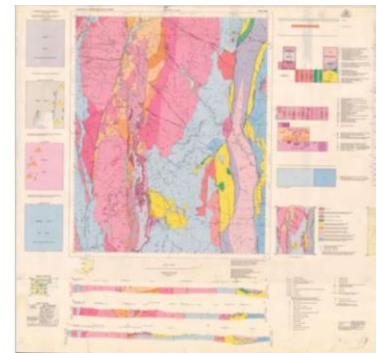


Leah Moore presenting at the geology workshop in the Araluen Hall © Clare Young

Our fragile waterways need a lot of care and maintenance to make them more resilient. Larry O'Loughlin, participant and Secretary of the Upper Shoalhaven Landcare Council (USLC), suggested it's all about "*slowing the flow, without causing other unintended impacts, and taking a catchment wide approach*".

While the recent heavy rains have made us more flood-focused, it mustn't be forgotten that erosion control is also vital during drought and post-fire events, such as those of the summer of 2019-2020. In this respect, creek restoration projects are

more important than ever to make our waterways more resilient to increasing numbers of extreme weather events.



From left to right, Leah Moore in action, the Araluen Valley and a geological map of the area © Clare Young

The Araluen Creek Restoration Project is undertaken by the Upper Deua Catchment Landcare Group (UDCLG), in partnership with USLC and the South East Local Land Services. They are planning additional works to rehabilitate the Araluen Creek from the effects of drought, bushfires and flooding over recent years. Stabilization of the creek is necessary to prevent further catastrophic outcomes for the Valley and protect those downstream who depend on good water quality.

Penny Hayman, Secretary of UDCLG notes “*climate change, and associated extreme weather events, mean that remedial action is urgent and unavoidable now, or future events will adversely impact the whole catchment of the Araluen Creek and Deua River - compromising the whole area's viability for years to come*”.

Penny also praised Leah for her excellent lecture, noting “*it was awesome to see it all flow and to have access to such a personable and able presenter*”.

The next workshop, focusing on soil erosion techniques, is scheduled for **Saturday, 26 March, 9.30am – 12.30pm**. See [upcoming activities](#) for more details.

The Araluen Creek Restoration Project is funded through the Bushfire Community Recovery and Resilience Fund.



Missed the workshop? You can still check out Leah's presentation:

[See Slides](#)

Upper Deua Landcare Group's Araluen Creek Restoration Project

Community Engagement – 19 January 2022

Upper Shoalhaven Landcare Council has partnered with Upper Deua Landcare Group and will be assisting the Araluen Creek Restoration Project with community educational workshops; project videography, a revegetation advice and species list, as well as using project materials for community awareness of the Bridge to Bridge project including display boards for a natural and cultural historic display walk.

1) Araluen Creek Restoration Workshop Series

Five educational workshops will be available to the Araluen and broader community. These workshops will include topics such as local soils and geology, soil erosion identification and management, riparian zone management, weed control and revegetation strategies and project field day to look at erosion control activities funded by this project.

Workshop Deliverables

- Ensure a mix of landowners on large, medium and small acres are involved.
- Workshops to also enable raised awareness of the possible increase in such rain events and future resilience required.
- Seek to involve all those in the larger area who may have high flow channels. small tributaries or large tributaries and have experience significant destruction recently.
- Improved community understanding of the fragility of the Valley floor.

2) Project Videography

USLC will be engaging a videographer to work with project partners on capturing the story, expertise and learnings of this project. The visual depiction of the damage and rehabilitation strategies in the Araluen Valley will raise awareness in the local and surrounding communities about disaster recovery processes.

The video will convey options for landowners and other stream communities to consider stream rehabilitation strategies. The video should be targeted at both the general population, and landowners who have stream and ground water issues, particularly those in areas where previous degradation of the terrain has occurred. The recording of how the control structures stand up to future rain events will also assist other communities to better understand the issues and remediation strategies in relation to extreme weather events.

Objectives of the video

- To help landholders in the Araluen valley understand and take action in response to future extreme weather events; and
- To raise awareness and educate surrounding communities on important issues affecting landholders due to extreme weather events.

3) Revegetation

USLC will provide support to the project by providing revegetation support and advice, including suitable species lists, site selection and design and site preparation, planting techniques, and maintenance. USLC will provide the project participants options to use our planting equipment if needed, including our ripper, moulder and tree planter and hand-held Hamilton tree planters. USLC can also assist project participant to organise a community tree planting day if landholders need assistance.

Key Deliverables

- Community awareness of suitable vegetation that will assist in prevention of erosion.

4) Bridge to Bridge – Public Awareness and Heritage Trail – Displays and Coordination

Co-ordinate information / stories and graphics of the Bridge to Bridge project as well draw together materials from the workshops to develop display boards for the natural and cultural historic trail.