



**Shoalhaven**  
City Council

## WRIGHTS BEACH BUSHCARE ACTION PLAN

### CONTACT INFORMATION

<b>Group Name:</b>	Wrights Beach Bushcare Group
<b>Contact:</b>	John Fimmano
<b>Address:</b>	4 Commonwealth Ave Wrights Beach
<b>Tel:</b>	4443 3455
<b>Email:</b>	
<b>Reserve Name:</b>	Wrights Beach
<b>Reserve No:</b>	BWB621
<b>Land Tenure:</b>	Crown Land Trust Manager
<b>Comm. Land Type:</b>	

### 1. BUSHCARE GROUP GOALS

The Wrights Beach Bushcare Group are looking at undertaking a project on the Crown Land foreshore reserve adjacent to Deakin St. The group's goals for the reserve are as follows:

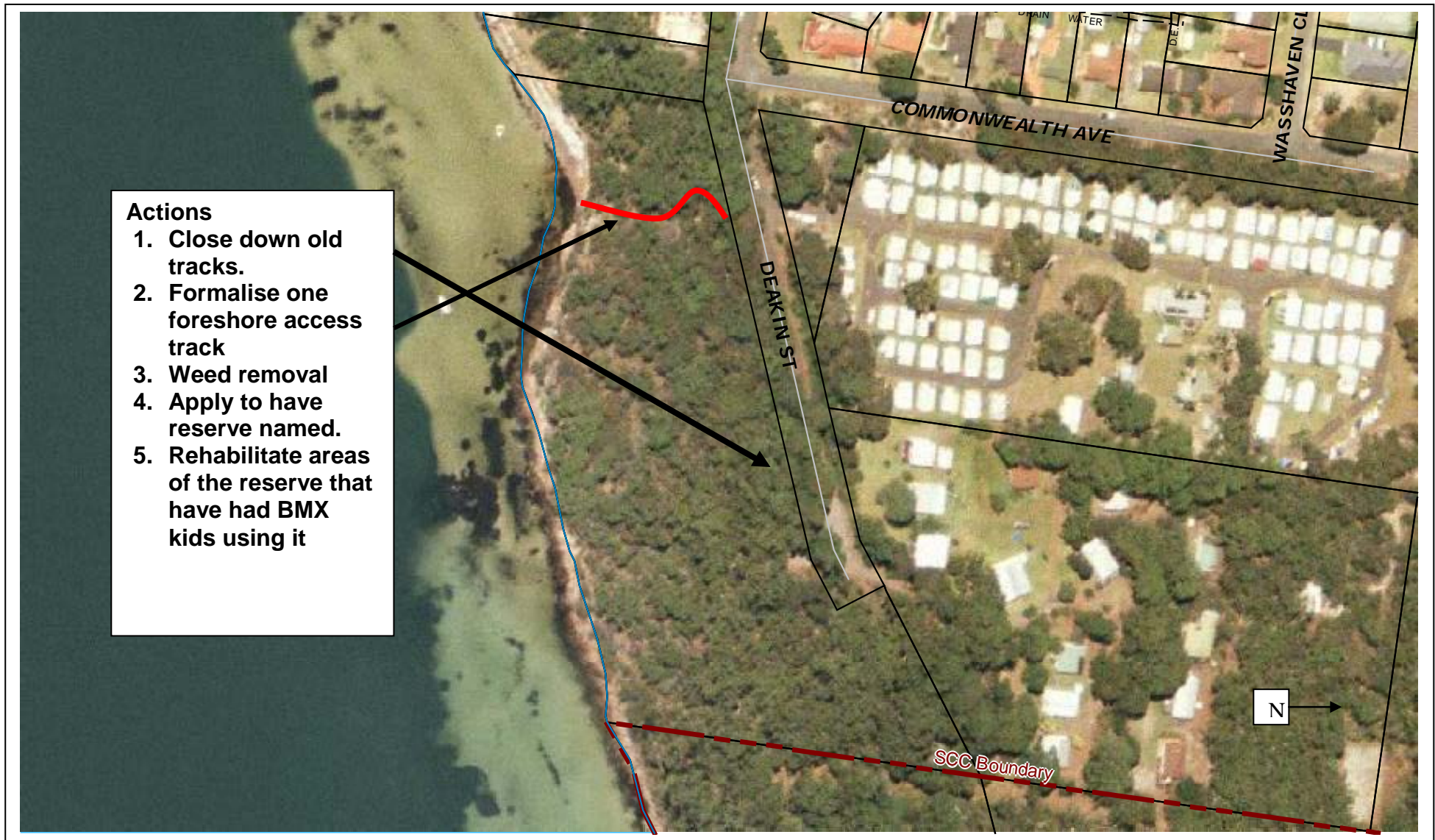
1. Removal of weeds
2. Consolidate informal foreshore access tracks
3. Closure of dangerous informal tracks and rehabilitate
4. Apply to Council to have the reserve formally named "Wrights Beach Nature Reserve"
5. Work with Council to install signage that acknowledges the formalised name
6. Reduce the impact on the reserve from BMX riders

**2. SHOALHAVEN BUSHCARE GROUP ACTION PLAN (to be in conjunction with attached site map)**

**NOTE: Priority should be rated as H = High (within 12 months); M = Medium (1-3 years); L = Low**

GROUP ACTION	PRIORITY	METHOD	TIME
<ol style="list-style-type: none"> <li>1. Bushcare to removal small amount of weeds in reserve</li> <li>2. Bushcare Group to apply in writing to Council to have the reserve formally named "The Wrights Beach Nature Reserve"</li> <li>3. Bushcare and Council to identify informal foreshore access track being currently used on the reserve and consolidate to one or two tracks for upgrading.</li> <li>4. Council to install reserve signage.</li> <li>5. Bushcare Group to talk to local kids riding BMX bikes in reserve to get their cooperation in rehabilitating some of the degraded areas, by closing of mulching and planting.</li> </ol>	<ol style="list-style-type: none"> <li>1. L</li> <li>2. H</li> <li>3. H</li> <li>4. M</li> <li>5. M</li> </ol>	<ol style="list-style-type: none"> <li>1. Hand removal</li> <li>2. Bushcare group to apply in writing to have reserve formally named.</li> <li>3. Council and Bushcare to consult with village on which tracks to close down and which to formalise, Council to supply materials and Bushcare to undertake works.</li> <li>4. Council to install signs</li> <li>5. Bushcare to undertake talks.</li> </ol>	<ol style="list-style-type: none"> <li>1. On going</li> <li>2. Completed</li> <li>3. 2010-11</li> <li>4. Completed</li> <li>5. 2010-11</li> </ol>

### 3. BUSHCARE GROUP ACTION PLAN MAP



#### 4. BUSHCARE GROUP OH&S & EQUIPMENT REQUIREMENTS

Type of Activity	Yes	No	SWMS name included
Manual weed control (cut & paint, scrape and paint etc)	√		SWMS NR060
Chemical control (spraying of herbicides)			SWMS NR040
Planting	√		
Minor construction (walking track, fencing, outdoor furniture)	√		
Propagation & seed collection			
Education (school groups, field days etc)			
Other			

#### 5. COUNCIL SUPPORT

- a. Provision of tools, materials and PPE equipment
- b. Technical advise
- c. Signage installation
- d. Assistance with having reserve formally named

#### 6. HAS A SITE HAZARD AND RISK ASSESSMENT BEEN COMPLETED FOR THE BUSHCARE SITE?

No √

Attach a copy of the site/s risk assessment to the plan.

#### 7. LIST THE PERSONAL PROTECTION EQUIPMENT REQUIRED FOR VOLUNTEERS WHILST WORKING ON THE SITE

PPE Equipment Required
First Aid Kit
Gloves
Sunscreen
Insect repellent

#### 8. POSSIBLE FUTURE FUNDING

Project	Funding source
N/A	

**9. PLAN WILL BE REVIEWED EVERY THREE YEARS – NEXT REVIEW DUE: APRIL 2013**

The group should review a summary of the Bushcare Policy & Procedures at the time of each annual review

**10. PLEASE LIST OTHER LOCAL OR REGIONAL MANAGEMENT PLANS OR STRATEGIES THAT THIS PLAN RELATES TO.**

<b>Name of document</b>	<b>Year it was produced</b>	<b>Produced by</b>
Foreshore Reserves Policy	2005	Shoalhaven City Council
Generic Community Land – Natural Area Plan of Management	2003	Shoalhaven City Council
St Georges Basin Estuary Management Plan	1998	Shoalhaven City Council

**11. SUGGESTED SPECIES LIST FOR FUTURE SITE REVEGETATION**

<b>OVERSTOREY TREES</b>	
<b>Botanical</b>	<b>Common</b>
<i>Banksia serrata</i>	Saw Tooth Banksia
<i>Eucalyptus botryoides</i>	Bangalay Gum
<i>Eucalyptus racemosa</i>	Scribbly Gum
<b>SHRUBS</b>	
<b>Botanical</b>	<b>Common</b>
<i>Allocasuarina littoralis</i>	Black She-Oak
<b>UNDERSTOREY (grasses, herbs, climbers)</b>	
<b>Botanical</b>	<b>Common</b>
<i>Hardenbergia violacea</i>	Happy Wanderer
<i>Hibbertia scandens</i>	Golden Guinea Flower
<i>Kennedia rubicunda</i>	Running Postman
<i>Lomandra longifolia</i>	Lomandra
<i>Scaevola aemula</i>	Fan Flower
<i>Scaevola albida</i>	Coastal Fan Flower
<i>Themeda australis</i>	Kangaroo Grass

**12. SITE WEED LIST**

<b>Noxious</b>	<b>Other</b>	<b>Control Method</b>
Pampass Grass		Spray glyphosate 1:100 during Spring Summer
	Honeysuckle	Scrape & Paint and Spray 1:100

		glyphosate during winter spring
Morning Glory		Scrape & Paint and manual removal and bag