

# Visioning survey

## REFRESHING RIVERS PROJECT CENTRAL BILLABONG

*Community workshops:  
July 5 Morundah July 6 Conargo*

### COMMUNITY SURVEY - WHAT DO YOU WANT FOR THE CENTRAL BILLABONG

Including: Yanco, Billabong and Colombo creeks; townships of Morundah, Jerilderie, Conargo and Wanganella; and surrounding areas (see map page 2).

#### ABOUT THE PROJECT

- 10 year, \$10M project funded through NSW Environmental Trust
- 3 target areas - **Central Billabong (YACTAC)**, Riverina Highlands (Riverina LLS), Upper Billabong (Holbrook Landcare),
- 15+ consortium partners: state (LLS, DPI) and Commonwealth (MDBA) governments, agricultural sector (MLA), universities (Griffith Uni), community networks (Landcare, YACTAC) and Indigenous groups (LALCs) led by Murray Local Land Services.
- New partnership and stewardship pathways for improving river health of Central Billabong.

#### THE ISSUE

Land use change and land management practices are the biggest unresolved drivers of river degradation across New South Wales.

#### THE PROMISE

Develop and implement integrated, inclusive, evidence-based river management plans for target areas to improve riparian and catchment land management and hence river health.

#### More Information

<https://landcare.nsw.gov.au/groups/yanco-creek-and-tributaries-advisory-council/refreshing-the-central-billabong/>

THIS PROJECT HAS BEEN ASSISTED BY THE NEW SOUTH WALES GOVERNMENT THROUGH ITS ENVIRONMENTAL TRUST

0419 841 834

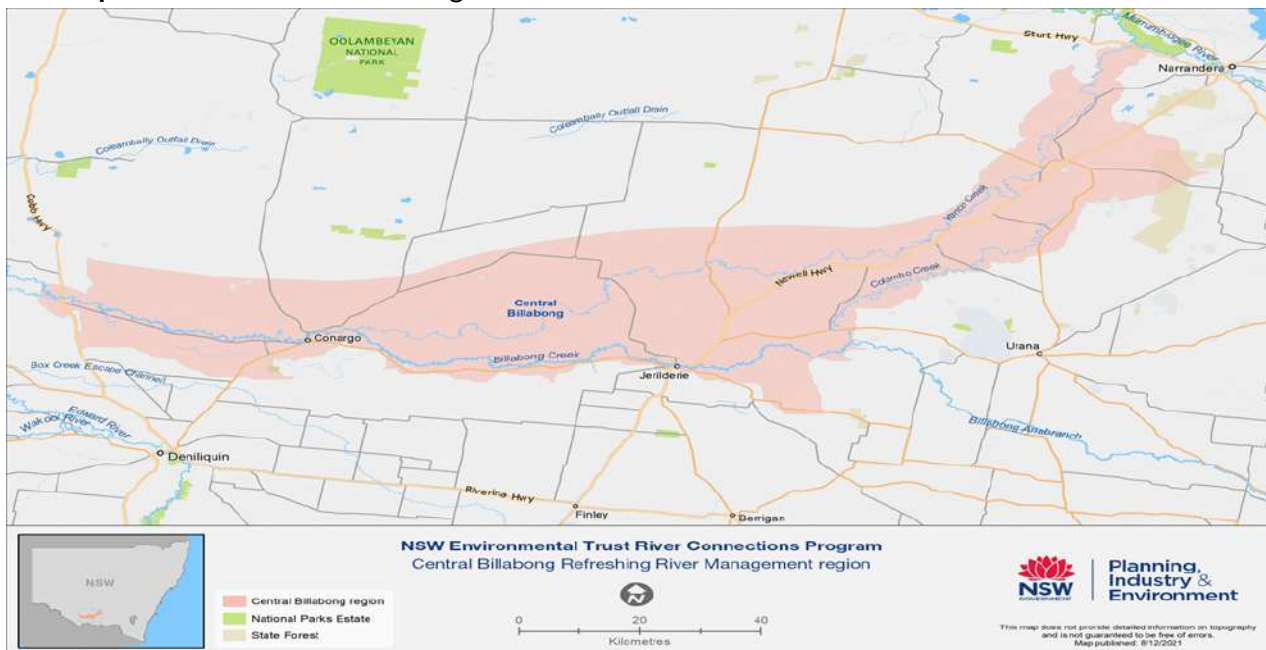
@ [yactac.env@outlook.com](mailto:yactac.env@outlook.com)



# INSTRUCTIONS FOR VISIONING PROCESS FOR CENTRAL BILLABONG REFRESHING RIVERS (RR) PROJECT

Visioning (sometimes called Brainstorming) is a technique used to support a community and stakeholders in developing a clear and shared vision for their future. Collecting information before the Central Billabong workshop will prepare all involved in thinking about visioning, and major topics or themes to be developed.

It will help significantly if you can complete the “visioning process” survey. Think about what you want your Central Billabong to be like into the future, and how you might want to be involved. Please return to YACTAC either by email ([yactac.env@outlook.com](mailto:yactac.env@outlook.com)) , mail, or just drop it in before the ‘**Central Billabong Community Visioning, Values and Objectives Workshop**’ which will be occurring soon.



Map of the Central Billabong for the 10 year Refreshing River Management project

## 1. PRINCIPLES FOR TRUST AND RESPECT IN ENGAGEMENT AND BEING INVOLVED IN THE CENTRAL BILLABONG RR PROCESS

Think about the conditions you want to see established to have trust in the process, and feel valued and involved. Example below:

An example of ‘Conditions for Trust’ a farming community developed in the USA.

### BOX 7.3 CONDITIONS FOR TRUST IN RIO CHALMER VALLEY OF NORTHERN NEW MEXICO

In discussions between government, environmentalists, and local farmers in the Rio Chalmer Valley of northern New Mexico, after many setbacks the group developed a list for “Future Conditions for Trust”:

1. Expect to make mistakes; acknowledge them, learn from them, try to forgive them.
2. Reveal relevant information, records, relationships.
3. Communicate immediately when there is a problem; don't let it fester.
4. Believe what I am saying; don't assume I am lying.
5. Don't set me up.
6. Don't bash me in the media.
7. Keep the door open.
8. Be able to differ with me in a respectful way, to disengage without malice.

Source: Moore (2013)

## **2. MY CURRENT VIEW OF THE CENTRAL BILLABONG IS:**

Can be a sentence, a paragraph, or a series of words explaining what you think the Central Billabong is like now and its present state.

## **3. MY OVERALL CURRENT VISION FOR MY CENTRAL BILLABONG IS, OR INCLUDES:**

Can be a sentence, a paragraph, or a series of words explaining what you want your Central Billabong to look like now and into the future.

## **4. WHAT ARE THE MAJOR THEMES YOU THINK ARE RELEVANT TO THE CENTRAL BILLABONG?**

Related to the major themes that will be associated with the management of the Central Billabong. e.g. Social/Cultural (camping, fishing, yabbing, culture, heritage, education/teaching) Environmental (fish, birds, frogs, vegetation), Economic (agriculture, forestry, firewood collection, grazing, tourism), Management (access, fire, third party impacts). Many of these themes will be related (cross-cutting), so do not worry about where exactly you think they go, just concentrate on writing them down. Think about the major objectives and actions you think are needed.

**5. WHAT I WANT TO SEE OR NOT SEE HAPPENING IN THE CENTRAL BILLABONG**

Fill in table below as much as you want, based on the different major themes.

Things I like about the Central Billabong now	Challenges I see in the Central Billabong now	Things I want avoided (now and future)	Things I want promoted (now and future)
<b>SOCIAL/CULTURAL</b>			
<b>ENVIRONMENTAL</b>			
<b>ECONOMIC</b>			
<b>MANAGEMENT</b>			

**6. WHICH (IF ANY) OF THE MAJOR THEMES WOULD YOU LIKE TO BE INVOLVED IN AND AT ANY LEVEL?**

There may be specific themes you are interested in, want to learn more about, and would like to work with others on in a small group. There is no obligation to be involved in the group, but you can still have input.

**7. ANY OTHER INFORMATION OR COMMENTS YOU WANT CONSIDERED FOR THE CENTRAL BILLABONG**

Provide information you think may be important or relevant, or you want considered as part of the future of Central Billabong RR project.

**8. CONTACT DETAILS IF YOU WOULD LIKE TO BE INVOLVED:**

Name

Email

Phone