

NSW Local Landcare Coordinators Initiative

In 2015, the NSW Government provided a \$15 million commitment over 4 years to fund the Local Landcare Coordinators Initiative (LLCI). The goal of which is to “renew the government – community relationship, and unlock the full potential of the thousands of volunteers in the Landcare network”

The LLCI is built on three main components - **Local Landcare Coordinators, Community of Practice and the Sustaining Landcare Project.**

The initiative is significant in both its commitment of funds and also in its joint management approach. It is collaboratively managed by Landcare NSW and the NSW Government, through Local Land Services via a Joint Management Committee.

The collaborative efforts to get to this point are a great example of the program’s vision in connecting communities and organisations together with government.



Outcomes

- **Partnerships** – Improved partnerships between NSW Government, Local Land Services and Landcare at all levels
- **Resourced** – Landcare and volunteer groups are sustainably resourced into the future
- **Valued** – Landcare brand is recognised, understood and valued by community, investors and partners
- **Capable** – Landcare is capable and resilient at all levels

Local Coordinators

A network of locally-based coordinators who work with their host organisations and local Landcare groups to deliver strategically aligned programs, support and guidance.

They will build the capacity and connectedness of their local groups and networks to stimulate on ground change and community vitality.

Community of Practice

The provision of a centralised support team. The team will work to increase the activity and effectiveness of Landcare networks. They provide a consistent approach to building group

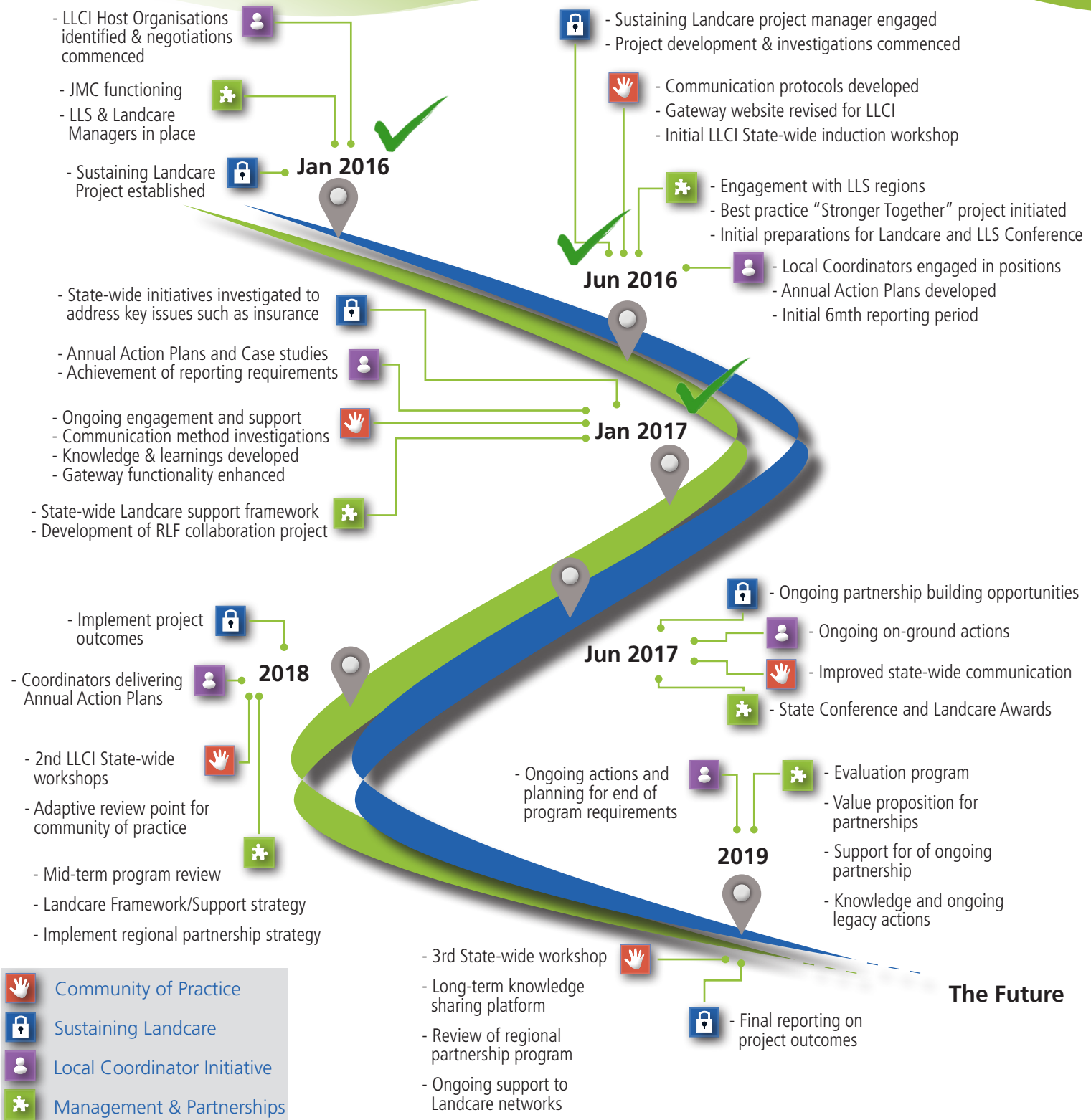
capacity across the state through dissemination of knowledge, training and communication, while collecting, collating and sharing information.

Sustaining Landcare

Working to establish an robust infrastructure, to provide resilient ongoing support at the local and regional scales.

Taking action to design and enact an approach that attracts a range of revenue streams to secure the future of Landcare in NSW.

Implementation Road map



Contacts



Chris McCulloch

NSW Landcare Program Manager
Local Land Services
0427 061 164
chris.mcculloch@lls.nsw.gov.au



Sonia Williams

NSW State Landcare Coordinator
Landcare NSW
0411 113 590
swilliams@landcare.nsw.gov.au



Melissa Joseph

Sustaining Landcare Project Manager
Landcare NSW
0414 499 666
mjoseph@landcare.nsw.gov.au