

# NSW Landcare Enabling Program

## Induction Pack

### MODULE 2. Landcare for Country

### NSW Aboriginal Landcare



This initiative is made possible by the NSW Landcare Enabling Program, a collaboration between Local Land Services and Landcare NSW supported by the NSW Government.

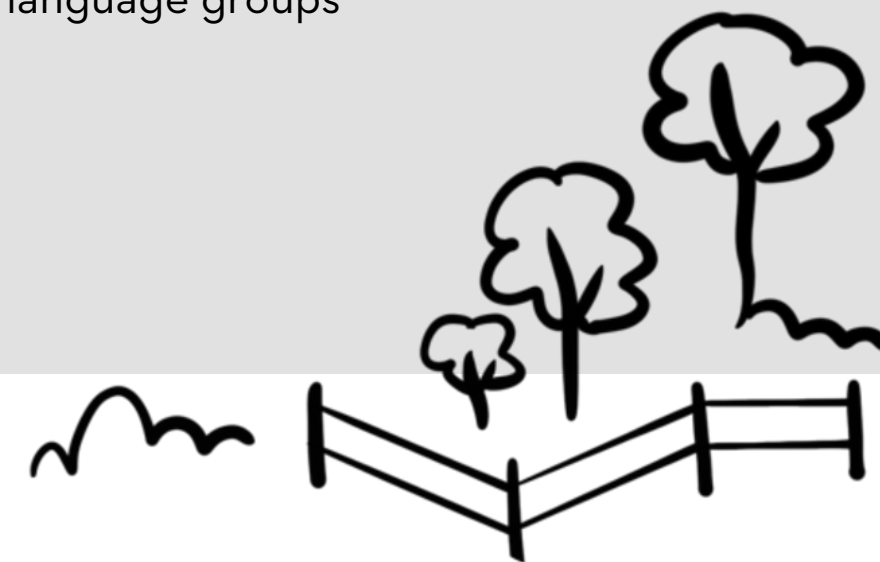


# Acknowledgement

Landcare NSW acknowledges the Country of the Traditional Aboriginal Custodians and their lands where we live, travel and work. We offer our respect to the Aboriginal People, their Elders, Ancestors and Descendants of this Country. We recognise their spiritual connection to the land, waters, and communities across New South Wales, and we are grateful for the opportunity to work on this Country.

Landcare NSW acknowledges that Australia's First Nations people are the continued traditional custodians of caring for Country and remain the original Landcarers of our land and waters. Generational responsibilities to care for Country remain alive and are integral to Aboriginal Lore, identity, culture and social and emotional well-being. We pay our respect to Elders, Traditional Owners, cultural practitioners and knowledge holders of the many nations and language groups within all our regions.

Dr. Turlough Guerin - CEO, Landcare NSW





# Terminology

## Aboriginal

Exclusively refers to Australian Aboriginal peoples, and Torres Strait Islander exclusively refers to peoples from the Torres Strait Islands. Both Peoples may have connections in and outside of NSW.

The use of the term

## Indigenous

The use of the term is retained in the names of programs, initiatives and publication titles and, unless otherwise noted, is inclusive of both Aboriginal and Torres Strait Islander peoples.

## Traditional Owner

An Aboriginal person who has traditional connection(s) to an identified geographical area of Country.

## First Nations people or First Peoples

Refers to peoples or nations of people connected to an area prior to colonisation.

Historically, in Government publications there has been a variety of different terminology used when referring to First Peoples: Traditional Owners, Aboriginal people, First Nations and Indigenous. First Nations peoples is a more inclusive way to refer to the community and is becoming a popular way of referring to Aboriginal and Torres Strait Islander communities. First Nations peoples represents all Indigenous People, as the First People or Traditional Owners of Country. When speaking about a particular geographical area - Traditional Owners are to be exclusively acknowledged for that area and are the only People that can speak for that area.

---

# Aboriginal Protocols Guidelines

A set of Aboriginal Protocols Guidelines has been developed to assist the Landcare community to acknowledge and engage with Aboriginal communities in meaningful ways. Access the Guidelines at the links below.



[Aboriginal Protocols - Welcome to Country Acknowledgement of Country](#)



[Aboriginal Protocols - Tips & Facts](#)



[Aboriginal Protocols - Communication](#)



[Aboriginal Protocols - Working with Aboriginal People](#)





---

# Landcare for Country - Key Outcomes

## Overall outcomes

Building of relationships, awareness, capacity and understanding of Indigenous sustainable land management practices, and integration of Indigenous values into Landcare principles and teachings.

## Short term outcomes

- Increased Aboriginal group participation rates
- Improved opportunities for Aboriginal people to engage with Country

## End of program outcomes

- Increased connections and partnerships between Landcare Groups and Aboriginal communities



---

# Aboriginal Partnerships Manager

This role, employed by Landcare NSW is a state-wide role funded through Local Land Services as part of the NSW Landcare Enabling Program.



Providing input into the development, implementation and promotion of effective high-quality community engagement strategies, initiatives and programs.



Establishing appropriate guiding protocols for incorporating Aboriginal practices into Landcare work and fostering understanding within Landcare groups, where appropriate.



Providing ongoing support and guidance to build proficiency and skills in appropriate cultural engagement into Landcare activities.



Collecting and collating data, analysing information and providing accurate, appropriately balanced advice, reports and recommendations that will progress the success of this initiative.

---

---

# How Can the Landcare Community Support First Nations Involvement in Landcare?

-  Read your local Aboriginal Cultural Strategies and Planning documents (found through Land Councils) and seek common ground
-  Help protect and preserve Aboriginal cultural heritage in your Landcare area
-  Support Traditional Owners to manage Country in the way they want to
-  Provide opportunities for Traditional Owner and First Nations communities to access and connect with Country through involvement in Landcare and caring for Country activities.
-  Seek Traditional Owner input into project planning, from the start
-  Keep Traditional Owners and First Nations community groups informed of Landcare activity
-  Invite Traditional Owners and First Nations community members to join your Landcare group or network



---

# Land Councils

Aboriginal land and sea councils help Aboriginal people reclaim and manage their land, and are a point of contact for non-Aboriginal people's inquiries. There are 121 Land Councils across NSW are divided into 5 zones across NSW.

As the State's peak representative body in Aboriginal Affairs, the New South Wales Aboriginal Land Council (NSWALC) aims to protect the interests and further the aspirations of its members and the broader Aboriginal community. NSWALC is the largest member based Aboriginal organisation in NSW.

The New South Wales Aboriginal Land Council (NSWALC) is committed to ensuring a better future for Aboriginal people by working for the return of culturally significant and economically viable land, pursuing cultural, social and economic independence for its people and being politically proactive and voicing the position of Aboriginal people on issues that affect them.

Click the live links for direct access



[Find and contact your local Zone office here](#)

[View the interactive Map of Land Councils here](#)





Click the live  
links for direct  
access



## Key Resources, Inspiration and Guides

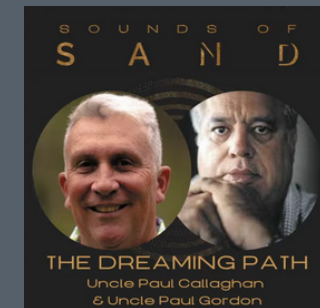
["You Can't Ask That" Aboriginal Awareness & Protocols Webinar](#)

["You Can't Ask That" Aboriginal Awareness & Protocols Document](#)

[Cultural Land Management Panel - 2022 National Landcare Conference](#)



[The Dreaming Path](#)



[Closing the Gap Reports and Implementation Plans](#)

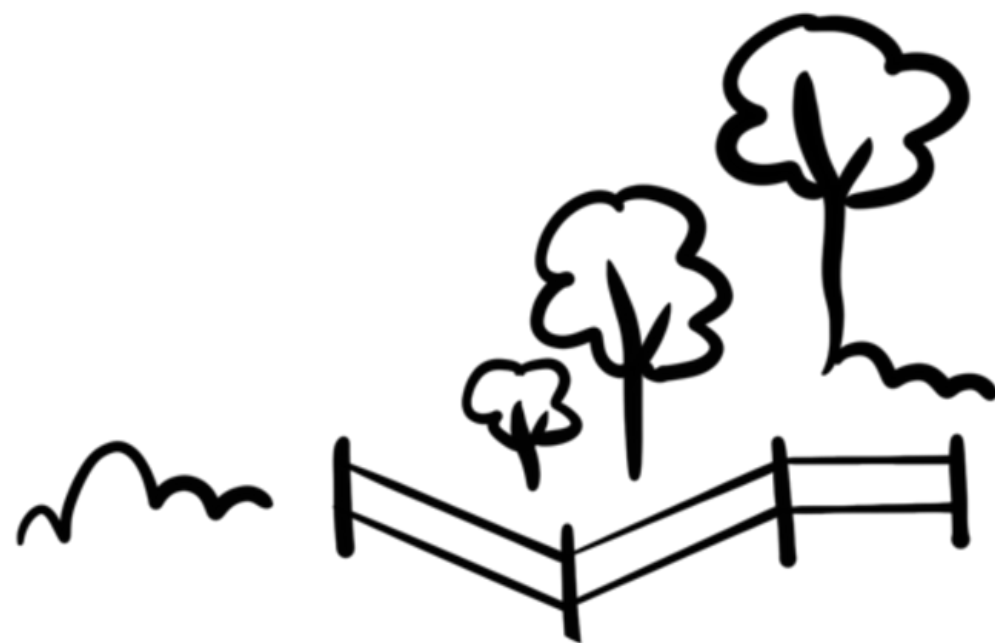


[Map of Indigenous Australia](#)



[LLS Aboriginal Culture and Communities Resources](#)





This initiative is made possible by the NSW Landcare Enabling Program, a collaboration between Local Land Services and Landcare NSW supported by the NSW Government.